



บันทึกข้อความ



ส่วนงาน กองวิเทศสัมพันธ์ สำนักงานมหาวิทยาลัย มหาวิทยาลัยเชียงใหม่ โทร. 43668

ที่ อว 8392 (7)/

วันที่ กุมภาพันธ์ 2564

เรื่อง ขอบความอนุเคราะห์ประชาสัมพันธ์ Gunma University Fall Semester Exchange Program

เรียน ผู้อำนวยการกองวิเทศสัมพันธ์

สรุปเรื่อง

Gunma University ประเทศญี่ปุ่น ขอความอนุเคราะห์ประชาสัมพันธ์โครงการแลกเปลี่ยน Gunma University Fall Semester Exchange Program สำหรับนักศึกษาระดับปริญญาตรี และระดับบัณฑิตศึกษา กำหนดจัดขึ้นระหว่างตุลาคม 2564 - มีนาคม 2565 นักศึกษาที่เข้าร่วมโครงการแลกเปลี่ยน จะได้รับการยกเว้นค่าธรรมเนียมการศึกษา มหาวิทยาลัยเชียงใหม่สามารถเสนอชื่อนักศึกษาได้ 4 คนต่อ 1 ปีการศึกษา ผู้สนใจกรุณาส่งเอกสารการสมัครดังนี้

1. Application Form
2. Study Plan
3. Certificate of Enrollment
4. Official Transcript
5. Recommendation Letter
6. สำเนา JPLT ระดับ N1-N2
7. Proof of Financial Support
8. Application of Certificate of Eligibility
9. Passport Size Photo

ผู้สนใจสามารถศึกษารายละเอียดเพิ่มเติมได้ที่ <https://www.guic.gunma-u.ac.jp/admission/exchange> หมดเขตเสนอชื่อถึง Gunma University ภายในวันที่ 1 มีนาคม 2564

ข้อเสนอเพื่อพิจารณา :

จึงเรียนมาเพื่อโปรดทราบและเห็นสมควรแจ้งเวียนคณะ วิทยาลัย บัณฑิตวิทยาลัย และสถาบันเพื่อประชาสัมพันธ์แก่ผู้สนใจต่อไป

19/01/20

คำสั่ง

ที่ อว 8392 (7)/ ๑๒๕ วันที่ ๑๙ กุมภาพันธ์ 2564

เรียน (✓) เลขานุการคณะ วิทยาลัย บัณฑิตวิทยาลัย และสถาบัน

(✓) เพื่อโปรดทราบและโปรดพิจารณาเสนอชื่อนักศึกษาหน่วยงานละ 1 ราย พร้อมส่งเอกสารการสมัครที่เกี่ยวข้องให้กองวิเทศสัมพันธ์ภายในวันที่ 19 กุมภาพันธ์ 2564 หากเกินกว่ากำหนดจะถือว่าท่านสละสิทธิ์ในการเสนอชื่อ อนึ่ง เนื่องจากปัจจุบันอยู่ในช่วงการระบาดของไวรัส Covid-19 กองวิเทศสัมพันธ์จึงขอเรียนว่าหากนักศึกษาประสงค์เข้าร่วมโครงการแลกเปลี่ยน ขอให้คำนึงถึงความปลอดภัยและช่วงระยะเวลาการเข้าร่วมกิจกรรม ตามประกาศของกระทรวงสาธารณสุขเป็นหลักด้วย จะขอบคุณยิ่ง

(นางสาววรรลักษณ์ สุธีวรรณนา)

ผู้อำนวยการกองวิเทศสัมพันธ์

เรียน ผู้ช่วยคณบดี (ผศ.ดร.บุษรี เฟ่งเล็งดี)

ผ่าน อ.ดร.ภักดีกุล รัตนา ปฏิบัติการแทนคณบดีในงานวิเทศสัมพันธ์

ด้วย Gunma University ประเทศญี่ปุ่น ประชาสัมพันธ์โครงการแลกเปลี่ยน
นักศึกษา Gunma University Fall Semester Exchange Program ให้แก่นักศึกษา
ระดับ ป.ตรี และบัณฑิตศึกษา กำหนดจัดขึ้นระหว่างเดือน ต.ค. 2564 - มี.ค. 2565
ผู้สมัครจะต้องเป็นนักศึกษาชั้นปีที่ 2 ขึ้นไป มีทักษะภาษาญี่ปุ่นในระดับดีมาก (มีผลการ
ทดสอบภาษาญี่ปุ่น JLPT N2 หรือ N1 ประกอบการสมัคร) ผู้ที่ได้รับการคัดเลือก จำนวน
4 ราย จะได้รับการยกเว้นเฉพาะค่าธรรมเนียมการศึกษา แต่จะต้องรับผิดชอบค่าใช้จ่าย
อื่น ๆ ที่เกี่ยวข้อง ได้แก่ ค่าเดินทางระหว่างประเทศ ค่าที่พัก ค่าประกันสุขภาพและ
อุบัติเหตุ ค่าใช้จ่ายส่วนตัว ฯลฯ ด้วยตนเอง รายละเอียดดังแนบ

เห็นควรปิดประกาศ ประชาสัมพันธ์ลงในเว็บไซต์และ Facebook ของคณะฯ
ผู้ที่สนใจสามารถสืบค้นข้อมูลเพิ่มเติมได้ที่ <https://cmu.to/Jk4ei> หรือตาม QR Code
ที่ปรากฏ และหากประสงค์จะสมัครเข้าร่วมโครงการดังกล่าว โปรดยื่นเอกสารการสมัคร
มายัง หน่วยวิเทศสัมพันธ์ คณะฯ ทั้งนี้ ภายในวันที่ 17 ก.พ. 2564



อรวิธา.
2 ก.พ. 2564
อรวิธา
2 มก 64
อรวิธา
3 กพ 64

ทราบ ดำเนินการตามเสนอ
ข้อความคำสั่ง (ถ้ามี)

(ผู้ช่วยศาสตราจารย์ ดร.บุษรี เฟ่งเล็งดี)
ผู้ช่วยคณบดี

๔ ก.พ. ๖๔

OUTLINE OF
GUNMA
UNIVERSITY

2019

Break your boundaries, go global from Gunma



Index

Message from President	1
------------------------	---

Special Reports

GU Topic 01	Establishment of the Center for Mathematical Modeling and Data Science and the Center for Food Science and Wellness	2
GU Topic 02	Center for Research on Adoption of NextGen Transportation Systems	3
GU Topic 03	Global Frontier Leader (GFL) Program	4
GU Topic 04	Mayudama Plan: Advanced—Innovation through a network of female researchers	5

Academic Programs

Undergraduate Programs	6 – 7
Graduate Programs	8–14
Organizations for Advanced Research and Education	

GU Data 2019

Student Enrollment	16–17
International Exchange Agreements	18–19
Number of International Students	20
Academic Calendar, Campus Access Map	21





Hiroshi Hiratsuka
President of Gunma University

Gunma University strives to become a pioneer for the 21st Century through intellectual creations which value traditions and take advantage of cooperation with the people of our area to achieve world-leading outcomes.

Gunma University originates from the Training Center for Elementary School Teachers founded in 1873, Kiryu Higher Dyeing and Weaving Vocational School founded in 1915, and Maebashi Medical College found in 1943. We established the Faculty of Social and Information Studies in 1993. Through its history, Gunma University has been providing an intellectual foundation for the area as an institution of higher education by innovating itself to respond to ever changing social needs over the ages of Meiji, Taisho, Showa, and Heisei.

Now, Gunma University tries to achieve further advancement based on this history and tradition. We made a reform of the management system of the university in 2014 to cope with changes in the modern society quickly and adequately. Especially, the foundation of the “Institute for Education and Research” was one of the highlights in the reform. Under this Institute, regarding the assignment of the teaching staff, which is the essential resource for the university, the traditional concept that its activities had been limited to each faculty was revised. And the organization of the teaching staff was unified. All teaching staff belongs to this unified organization without any sort of partition, and individual teachers are dispatched from the Institute to different faculties and departments to exercise their roles such as education, research and social contribution. Under the circumstance, each faculty provides highly professional education to utilize the expertise with flexible and appropriate staff assignment. The Faculty of Education encourages the improvement of the Graduate School of Education to develop human resources who will grow to lead education in areas where the number of children declines. The Faculty of Social and Information Studies aims to develop human resources who are capable of identifying issues in the advanced information society and suggesting solutions to the issues with scientific thinking, practical information processing, and data collection/analysis. The Faculty of Medicine promotes the development of high-level medical professions by focusing on participation-based education

and the education of team medical care, considering that multi-occupational collaboration is essential to provide safe medical care. The School of Science and Technology, a pioneer of the Global Frontier Leader (GFL) Course for development of the next-gen leaders incorporated in all faculties, develops engineers and researchers who are capable of playing a key role for the future of the world.

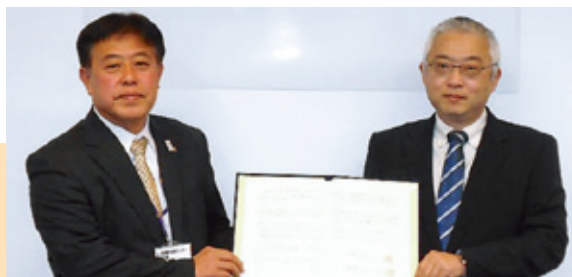
As one of world-class features of Gunma University, there is a “cancer treatment” utilizing the heavy ion radiotherapy facility installed at Showa Campus as a joint business with the government of Gunma Prefecture. It is the second oldest facility at a university hospital in the world, and is the only one in Japan. Since the treatment started in 2010, about 3,400 cancer patients have received the treatment, and further development is expected.

In 2014, the Initiative for Advanced Research was established to propel the advancement of two medical groups: Integrated Oncology Research with heavy ion therapy as a core, and Endocrinology, Metabolism and Signal Research. We aim that it will become a truly global epicenter for medical research by establishing overseas laboratories and inviting capable researchers there. And it is expected that this movement will stimulate the Institute for Molecular and Cellular Regulation and the Graduate School of Medicine to strengthen their performance further.

In addition, we founded the Center for Research on Adoption of NextGen Transportation Systems in December 2016 with a view to promoting research on a new transportation system that utilizes a fully autonomous automated driving technology. We built a research facility in Aramaki Campus in 2018 to actively contribute to solving issues of the local community in cooperation with local companies and local governments.

Summarizing all new movements above, Gunma University promotes the enhancement of the university's functions based on its strength, develops superior activities in the fields of education, research, medicine and social contribution based on intellectual creation, respects the relationship with people in the area, and continuously strives to become a world-class university.

Establishment of the Center for Mathematical Modeling and Data Science and the Center for Food Science and Wellness



(Center for Mathematical Modeling and Data Science) To realize a super-smart society

As innovative basic technologies that support the Fourth Industrial Revolution and so called super-smart society (Society 5.0), such as AI, Big Data, IoT and data utilization technologies (e.g., statistical methods), are increasingly becoming the keys to economic development, the development of talents with strengths in fields such as data science and information security is an urgent issue. The use of data (information) is essential in all industries and data utilization literacy is required for all professions.

The Center was established in December 2017 to carry out education and research concerning mathematical data science and information mathematics that use actual data—the core strengths of our university—with the ultimate goal of realizing a super-smart society (Society 5.0). Through collaboration among the Information Mathematics Unit, the Data Science Unit, and the Medical Information Unit in undertaking education and research, the Center develops human resources with the mathematical thinking that is necessary for playing active, practical roles in society, carries out development and research on education techniques that use ICT, and undertakes practical research using actual data (including Big Data), among other activities.

(Center for Food Science and Wellness) To promote local industries and to extend healthy life expectancy

In response to the growing health awareness among people in recent years, the food industry is shifting its eye to “health and beauty,” and interest in adding high values to products through evidence-based assessments of food functionality is growing.

The Center was established in December 2017 to carry out education and research by collaborating with local governments and industries by making use of our university’s functions that contribute to education/research concerning food and health, and the promotion of local resources across broad areas in the arts and sciences, including analytical functions related to food safety and reliability, prevention/development functions related to lifestyle-related illness, education/research functions related to food development/advanced processing/production technologies, and education/research functions related to food education, health awareness and branding. The Center contributes to the promotion of local industries and the extension of healthy life expectancy by strengthening the local contributions our university has been making through evidence-based development of high-functionality food products that use produce produced in the prefecture, branding, advanced use of food residues, and the promotion of exports.

Center for Research on Adoption of NextGen Transportation Systems



To realize a fully automated driving system

Established in December 2016, the Center for Research on Adoption of NextGen Transportation Systems (CRANTS) is a research organization that aims not only to carry out research and development on fully autonomous vehicles, but also to investigate, demonstrate and promote social systems for the adoption of such vehicles in society.

In April 2018, CRANTS' research facilities were relocated to the Aramaki Campus, thereby launching it on the road to conducting full-scale activities.

CRANTS has all the facilities necessary for the research and development of self-driving vehicles, such as a vehicle maintenance and development room, a control and remote-control equipment room, a data center, and a simulation room, as well as laboratories that can be used by the employees of various companies. The Center's test course (6,000 m²) is one of the largest among those owned by public research institutions, where diverse road environments can be created by combining movable road elements (signals, signs, etc.) allowing experiments to be conducted for various technologies. CRANTS owns a wide range of passenger vehicles, buses, trucks and single-seat small vehicles that have been modified as self-driving

vehicles, and which are also used in demonstration experiments on public roads jointly carried out with partner companies and for other purposes. Data obtained from such experiments are analyzed from multiple angles and used to realize an early adoption of fully automated vehicles.

Fully automated driving systems have the potential to radically change society's transportation systems. CRANTS not only carries out research and development on fully automated vehicles, but also jointly works with local companies and governments in research with the aim of implementing a system that use such vehicles in society.

Global Frontier Leader (GFL) Program



Gunma University focuses on the development of “global frontier leaders” who understand the cultures, histories and traditions of their own country and other countries, can communicate in foreign languages, and can proactively engage in activities both in Japan and overseas. As part of this effort, the GFL Program has been established, in which two courses—GFL-ESI Course (Global Frontier Leader Course for Faculties of Education & Social and Information Studies) and GFL-MST Course (Global Frontier Leader Course for Faculties of Medicine & Science and Technology)—offer education centering on the acquisition of broad knowledge and foreign language communication skills as well as aiming to equip students with a global perspective through overseas studies.

A “tuition exemption for outstanding students” preferentially applies to students admitted to our university through this special admission system, which includes a GFL course in the first semester of the first year involving participation in a short-term study overseas.

The Faculty of Social and Information Studies and the School of Science and Technology introduced the GFL Special Admission Program as part of their

recommendation-based entrance examinations starting with the entrance examinations for the academic year 2019. The aim is to establish a system under which our students can start the GFL Program upon admission to the university.

04

Mayudama Plan: Advanced—Innovation through a network of female researchers



To become a university where, based on its diversity, everyone can exert their individuality and ability

Gunma University is striving to produce talented resources, including students, able to play active roles in the next generation, to respect diversity, and to create study and working environments in which everyone can fully exert their individuality and ability.

By seamlessly continuing programs from the Mayudama Plan (2013–2015, the Program to Support the Activities of Female Researchers, the Ministry of Education, Culture, Sports, Science and Technology) through to the Mayudama Plan: Advanced (2017–2022, Initiative for Realizing Diversity in the Research Environment, the Ministry of Education, Culture, Sports, Science and Technology), we are currently working to achieve the following three goals:

(1) Recruiting of talented female researchers and increasing the number of females in higher positions

To attain the target of increasing the proportion of female researchers to 20% as early as possible, we have been communicating with individual faculties regarding their progress with respect to their recruiting plans. We also hold symposiums for raising awareness, FD (faculty development) seminars, and Mayudama lunch meetings with university executives, among other events.

(2) Establishment of a network and creation of innovations
We focus on holding seminars useful for improving research skills and on local collaboration with tertiary education institutions based in the prefecture, and in 2016, we established the Network for Promoting Diversity in Gunma Prefecture (to date, 14 organizations have expressed their support). The website of this network

features female researchers from supporter organizations, their specialized fields, and their research themes.

(3) Creation of an attractive environment and the establishment of a virtuous circle

To create an environment where female researchers can balance work and life—events such as childrearing, support for their research activities has been boosted, and parts of the facilities are made available to after-school care, and volunteering in the after-school care is incorporated in the curriculum of the Faculty of Education.

At our university, Mayudama has become a keyword for gender equality; under the leadership of the president, by designating the period between 2013 and 2022 as the “Mayudama decade,” the Gender Equality Office and other relevant parties have been eagerly promoting gender equality at the university. These efforts were recognized and in May 2015, Gunma University obtained a Kurumin certification from the Ministry of Health, Labour and Welfare’s Gunma Labor Bureau, gaining official status as a childcare support organization—the first educational institution in the prefecture to receive the certification. Each campus has a Mayudama Space that offers support for childrearing and nursing care as well as serves as a place where information on support is exchanged. Counseling provided by work-life balance advisers has proved to be effective, receiving more than 250 inquiries per year (including 38 inquiries from men).

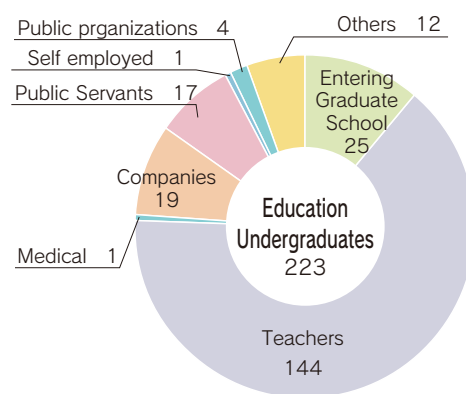
Faculty of Education

The primary objective of the Faculty of Education is to cultivate teachers to lead school education in the new age, particularly for elementary/junior high schools and special education schools. Our goal is to foster educators with practical instruction ability based on highly specialized knowledge and skills coupled with the rich humanity required for tackling various issues of school education in flexible and effective manners.



Program	Divisions	Majors	Department
School Education	Language and Social Sciences	Japanese Education, Social Studies Education, English Education	Japanese Education Social Studies Education English Education
	Natural and Information Sciences	Mathematics Education, Science Education, Technical Education	Mathematics Education Science Education Technical Education
	Arts and Music	Music Education, Art Education	Music Education Art Education
	Life and Health Sciences	Home Economics Education, Health and Physical Education	Home Economics Education Health and Physical Education
	Education and Human Sciences	School Education, Education Psychology, Education for Individuals with Special Needs	Health and Physical Education Education for Individuals with Special Needs

Employment of Graduates



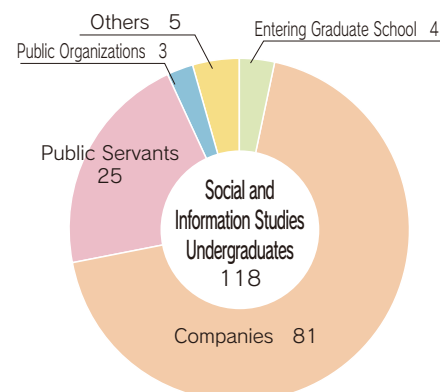
Faculty of Social and Information Studies

Highly sophisticated information technology has drastically changed not only our daily life but every aspect of our society. It is our urgent task to assess these changes from multiple viewpoints in an integrated way to solve related problems that arise. In other words, we cultivate people who will note the issues to be solved in this information society and suggest relevant solutions based on scientific thinking and through practical information processing and collection/analysis of data.



Department	Majors	Special course
Social and Information Studies	Media and Culture Public Affairs and Law Economics and Management	Data Analysis Program Global Frontier Leader (GFL) Program

Employment of Graduates



Faculty of Medicine

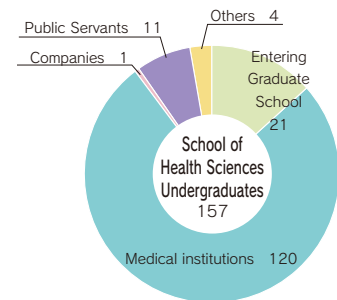
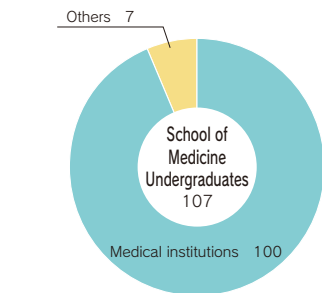
The primary objective of the School of Medicine is to cultivate people who understand that medicine and healthcare are based on natural science and target human beings in society, and who continue self-improvement through life in all the three areas of SES: science, ethics, and skills. To achieve this objective, we promote outcome-based education focusing on SES to nurture “superb clinicians, medical researchers, medical administrators, and medical educators who can engage in continuous improvement through their life,” with the goal to contribute to medicine, medical treatment, and the local community.

The School of Health Sciences develops integrated and advanced health science education/research to realize four principles/objectives: “Cultivation of clinical nurses, public health nurses, maternity nurses, clinical laboratory technicians, physical therapists, and occupational therapists who undertake ever advancing and highly specialized healthcare,” “Producing specialists who will contribute to the establishment and development of the academic system for medical technology,” “Providing people who will exercise leadership in team medicine,” and “Cultivation of specialists who will take an active role in international society.”

School	Department	Fields
Medicine		
Health Sciences	Nursing	Fundamental Nursing, Clinical Nursing, Maternal and Child Health Nursing and Midwifery, Community Health Nursing
	Laboratory Science	Basic Laboratory Sciences, Clinical Laboratory Sciences
	Physical Therapy	Basic Physical Therapy, Clinical Physical Therapy
	Occupational Therapy	Basic Occupational Therapy,



Employment of Graduates



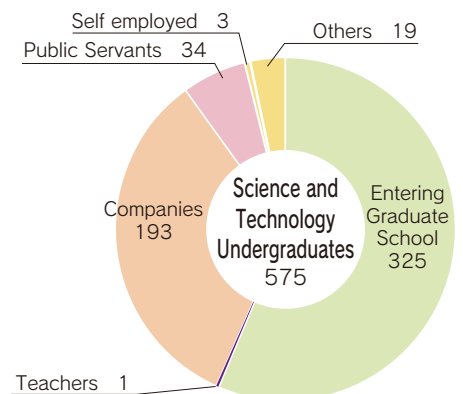
School of Science and Technology

Our goal is to cultivate researchers and engineers with international communication skills and who will be active on the global stage, by an education in science and engineering that provides students with a broad and objective view and ways of thinking based on science, coupled with practical and creative problem-solving skills based on engineering, where individual ideas and intellectual curiosity are valued and students are encouraged to challenge the unknown with energy and creativity.

Department
Chemistry and Chemical Biology
Mechanical Science and Technology
Environmental Engineering Science
Electronics and Informatics
Intergrated Science and Technology



Employment of Graduates





Graduate School of Education

<http://www.edu.gunma-u.ac.jp/en/>



The Graduate School of Education provides a Masters Course and a Teacher Education Course, both of which are two-year courses. Based on undergraduate education, these graduate courses aim to nurture teachers equipped with practical leadership skills and who exercise them in the field of school education.

Master's Program

Programs	Courses	Majors
Education for individuals with Special Needs		
Education Practice in Specialised Subjects	Language and Social Sciences	Japanese Education, Social Studies Education, English Education
	Natural and Information Sciences	Mathematics Education, Science Education, Technical Education
	Arts and Music	Music Education, Art Education
	Life and Health Sciences	Home Economics Education, Health and Physical Education

Professional Degree Course

Programs	Courses
Program for Leadership in Education	Support for Childhood Education and School Life
	School Administration

Special Graduate Course of Special Education

Programs	Courses
Education for the Multiply Handicapped	Course for the First Class Certificate
	Course for the Advanced Class Certificate



Graduate School of Social and Information Studies

<https://www.si.gunma-u.ac.jp/english/>



We provide social and information studies with both width and depth. These aim to cultivate "highly specialized professionals" who can participate in decision-making processes of administrative, business, and non-profit organizations in a practical manner and to nurture "practical researchers" who investigate issues of our information society and human beings as well as forms of organizations.

Master's Program

Programs	Courses
Social and Information Studies	Media and Social Design Course
	Social and Information System Design Course





Graduate School of Medicine

<https://www.med.gunma-u.ac.jp/en/>



Our goal is to pursue science, ethics, and skills and, based on their dynamic integration, to construct a base of education, research, and medicine to lead global medicine. For this purpose, we promote advanced life-science research while also cultivating medical researchers who devote themselves to elucidation of pathogenesis as well to practice of systematic treatment strategies. At the same time, we nurture medical staff equipped with a high moral standard and superior clinical research skills, whose research results will be actively returned to society.

Master's Program

Programs
Biomedical Science

Doctoral Program

Programs	Courses	
Medical Sciences	Basic Medicine	Anatomy, Anatomy and Cell Biology, Molecular and Cellular Neurobiology, Biochemistry, Integrative Physiology, Neurophysiology and Neural Repair, Neurobiology and Behavior, Genetic and Behavioral Neuroscience, Molecular Pharmacology and Oncology, Bacteriology, Infectious Diseases and Host Defense, Public Health, Legal Medicine, Medical Philosophy and Ethics
	Clinical Medicine	Cardiovascular Medicine, Respiratory Medicine, Gastroenterology and Hepatology, Endocrinology and Metabolism, Nephrology and Rheumatology, Hematology, Neurology Cardiovascular Surgery, General Thoracic Surgery, Gastroenterological Surgery, Breast and Endocrine Surgery, Hepatobiliary and Pancreatic Surgery, Pediatric Surgery Radiation Oncology, Diagnostic Radiology and Nuclear Medicine, Psychiatry and Neuroscience, Anesthesiology, Emergency Medicine, General Practice Medicine, Rehabilitation Medicine, Clinical Laboratory Medicine, Human Pathology, Diagnostic Pathology, Pediatrics, Obstetrics and Gynecology, Urology, NeuroSurgery, Ophthalmology, Otolaryngology-Head and Neck Surgery, Dermatology, Plastic Surgery, Orthopaedic Surgery, Clinical Pharmacology and Therapeutics, Oral and Maxillofacial Surgery, Healthcare Quality and Safety
		<p>【Cooperative and Joint Department】</p> <ul style="list-style-type: none"> ● University Hospital Clinical Trials and Regulatory Science Medical Informatics ● Institute for Molecular and Cellular Regulation Molecular Traffic, Medical Neuroscience, Molecular Membrane Biology, Molecular Endocrinology and Metabolism, Developmental Biology and Metabolism, Metabolic Signaling, Laboratory of Epigenetics and Metabolism, Molecular Genetics, Genome Sciences, Laboratory of Integrated Signaling Systems ● Heavy Ion Clinical Medicine Medical Physics and Biology for Ion Therapy, Heavy Ion Clinical Medicine ● Center for Food Science and Wellness Food Science and Wellness ● Center for Mathematics and Data Science Mathematics and Data Science ● Takasaki Advanced Radiation Research Institute, National Institutes for Quantum and Radiological Science and Technology Quantum Biology



Graduate School of Health Sciences

<https://www.health.gunma-u.ac.jp/en/>



Our objective is to further improve the knowledge, technique, and basic research skills of health science students, promote unique and inter-disciplinary research activities for maintenance/enhancement of health and quality of life both for individuals and communities, and provide students with a wide range of knowledge, highly specialized knowledge/skills, and a high moral standard.

Doctoral Program

Programs	Courses	Units and Departments
Master's Program	Health Sciences	Unit of Fundamental Health Sciences, Unit of Applied Health Science, Unit of International and Community Health Sciences
Doctoral Program		Department of Nursing, Department of Laboratory Sciences, Department of Rehabilitation



Graduate School of Science and Technology

<http://www.st.gunma-u.ac.jp/home-e/>



Our goal is to cultivate highly advanced science and engineering professionals who will respond to social needs with integrated practical skills and creativity based on a broad view of various issues related to industrial activities, which now face ever developing diversification and multi-stratification.



Programs	Courses	
Master's Program	Science and Technology	Materials and Biosciences
Doctoral Program		Mechanical Science and Technology
		Environmental Engineering Science
		Electronics and Informatics, Mathematics and Physics

Advanced Course for Special Needs Education

Based on the undergraduate education, this non-degree, one-year graduate program provides highly professional training for special needs education and makes you competent professionals who can deal with social needs.



Programs	Courses
Education for the Multiple Disabilities	Course for the First Class Certificate
	Course for the Advanced Class Certificate

Organizations for Advanced Research and Education



Institute for Molecular and Cellular Regulation

<https://www.imcr.gunma-u.ac.jp/?lan=en>



The Institute for Molecular and Cellular Regulation is actively involved in diabetes-related research, including the mechanism of insulin secretion and action, differentiation/regeneration of intraspleen insulin-secreting cells, and elucidation of pathogenesis/pathophysiology of lifestyle-related diseases such as diabetes and obesity. The institute has had major achievements in basic research areas such as the fundamentals of pathogenesis/pathological conditions of endocrine/metabolic diseases, including intracellular membrane transport, inter/intracellular signal signaling, energy metabolism/feeding regulation, stresses/inflammatory response, and epigenetic control. Through these research activities, we contribute to onset prevention/condition control of diseases caused by abnormal biological regulation.

Research Department

Research Departments	Laboratories
Department of Molecular and Cellular Biology	Molecular Genetics, Molecular Traffic, Epigenetics and Metabolism, Molecular Membrane Biology
Department of Molecular Medicine	Molecular Endocrinology and Metabolism, Integrated Signaling Systems, Developmental Biology and Metabolism, Medical Neuroscience



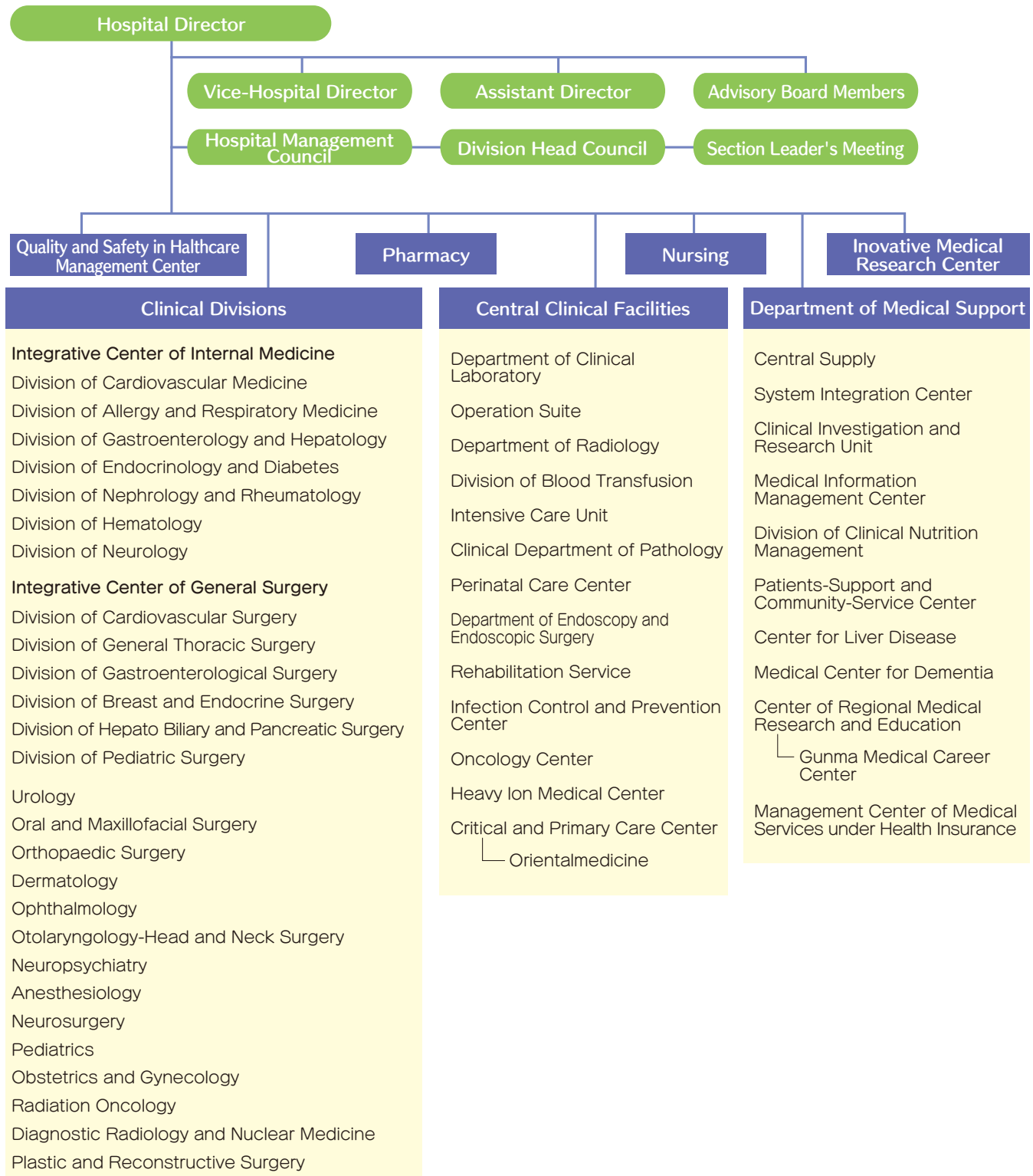
Affiliated Research Center

Affiliated Research Centers	Laboratories
Biosignal Genome Resource Center	Genome Science, Medical Genomics,
Metabolic Signal Research Center	Metabolic Signal, Translational Research
IMCR Joint Usage/Research Support Center	—



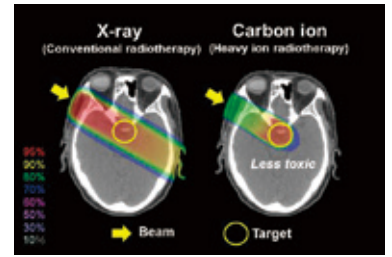
University Hospital

Our objective is to enhance education and research in the field of medicine through practice of medical treatment. Education, medical treatment, and research are the three important responsibilities of the university hospital. Regarding education, the hospital provides opportunities for clinical exercises upon request from the School of Medicine and initial education after graduation. Concerning medical treatment, we contribute to local medicine as a medical institution providing services covered by health insurance, while also providing highly advanced medical treatment that is difficult for a general hospital to perform. In the area of research, we engage in clinical research mainly to develop advanced medical techniques.

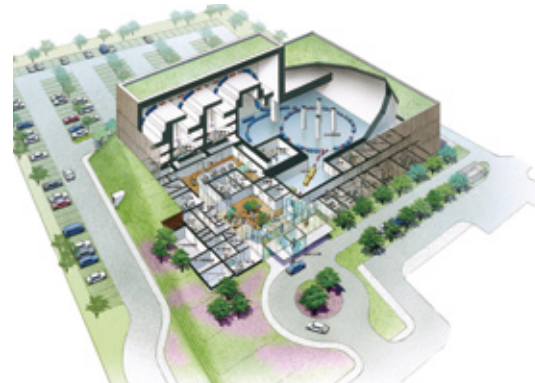




Heavy Ion Medical Center Research Institute
Heavy Ion Medical Center Clinical Division



Challenge to intractable cancer, Advanced research on heavy ion medicine



Applying the potential of the heavy ion beams for future medical care

One in two people get cancer in Japan. Nowadays, a cancer treatment method needs to be selected in consideration of not only the chance for recovery but also the quality of life after the treatment.

The heavy ion beam has a potential to contribute to the future medical care greatly, such as overcoming intractable cancer and application to other diseases, because it is advantageous from biological and physics aspects compared to conventional radiotherapy. Gunma University, as an institution which the facility of the heavy ion therapy is attached to, conducts advanced medical care and research on various types of cancer from the standpoint of physics and biology fields.

In the field of physics, the collaborative integration between medicine and engineering is broadly studied. For example, the studies include the irradiation technique that ensures the quality and safety of medical treatment and that reflects the movement of internal organs to the treatment accurately, development of a new radiation dose measuring method for highly accurate therapeutic planning, development of a carbon beam CT and quasi-monochromatic X-ray CT for accurate measurement of electron densities inside human bodies, and development of a diagnostic imaging system using Compton camera. We

promote the development of a carbon-knife treatment as a next-gen heavy ion therapy and try to apply this technology for patients with diseases other than cancer by the improvement of the accuracy of the accelerator and beam control.

In the field of biology, the Heavy Ion Medical Research Center, Initiative for Advanced Research including the open laboratory of Harvard University, Radiation Oncology Laboratory, and related graduate students work in cooperation for cutting-edge research on about 20 themes including collaborative research themes for the purpose of demonstrating advantages of the heavy ion therapy, improving effects, and promoting sophistication and optimization. These days, the heavy ion beam is applied in research on space radiation. It contributes to the development of a new academic field.

Taking advantage of these unique strengths, Gunma University propels international cooperation and strives to develop a world-leading research hub as well as human resources through a variety of education and research programs such as the Doctoral Education Leading Program and Initiative for Advanced Research.

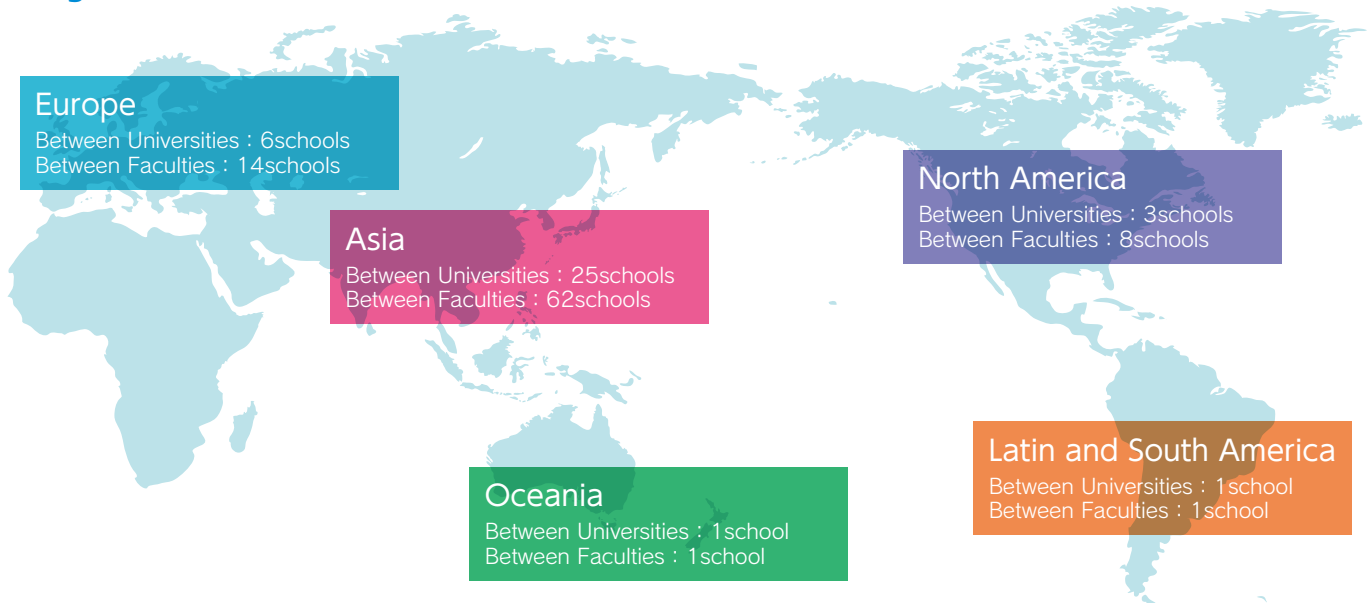
International Exchange

With the aim to promote international academic/student exchanges, Gunma University develops various exchange programs, including for researchers and students, and short-term training programs, based on a wide range of comprehensive international exchange agreements with universities and other institutions internationally.

Gunma University International Center was founded in May 2017, to plan, discuss, and determine the overall policies of the university on international development/projects under the initiative of the International Strategy Section and to promote international exchange projects, including studying abroad and overseas training programs targeting students, hosting of foreign students, overseas dispatching of teaching staff, and hosting of foreign researchers.

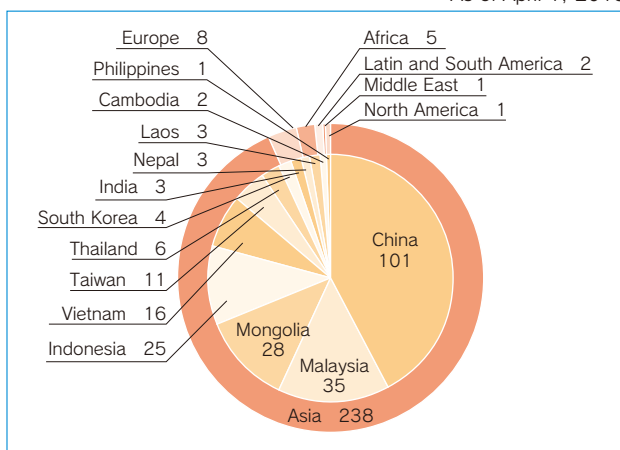
Agreement between Universities and Faculties

As of May 1, 2019



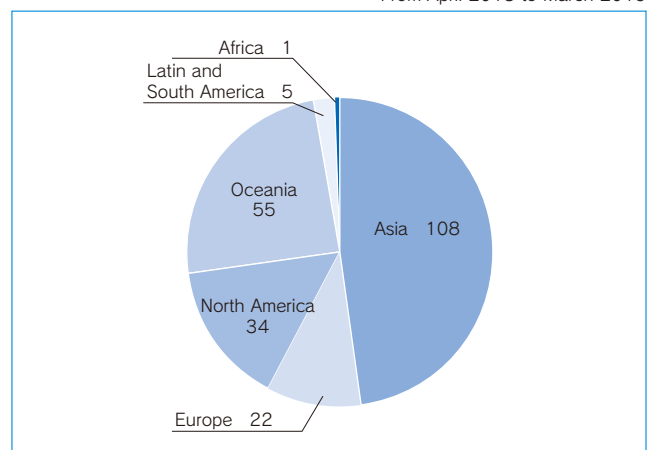
Number of Foreign students by region

As of April 1, 2019



Number of outgoing student by region

From April 2018 to March 2019



Summer Program
Experience Japanese Culture



English study and training in University of
Wollongong, Australia



Science and Technology Research Partnership
for Sustainable Development



● Gunma University International Center (GUIC)

The International Center's purpose is to promote research and student international exchange at Gunma University. In order to fulfill this purpose, two specific working groups help to support the International Center.

- (1) Working Group for Research International Exchange.
- (2) Working Group for Student International Exchange.

What each working group does is described as follows:

Research International Exchange Working Group:

- (1) To promote and increase the acceptance of foreign researchers.
- (2) To dispatch Japanese researchers overseas.
- (3) Attending to other matters related to research international exchange.

Student International Exchange Working Group:

- (1) To plan, manage and implement outbound programs for Japanese students.
- (2) To provide advice about learning, training programs and daily life for Japanese students studying overseas.
- (3) To plan, manage and implement educational programs for inbound international students.
- (4) To accept inbound international students and provide consultation services for their learning and daily life concerns.
- (5) To conduct research related to Japanese language education and Japanese Society and Culture and their related fields.
- (6) Attending to other matters related to international student exchanges.



In April 2002, the University Hall was newly established on the Aramaki Campus to promote student education and exchange. Lectures rooms, a common lounge, a study room and other facilities have served to strengthen the function of GUIC.

There are also rooms for international students on the Showa Campus and the Kiryu Campus.

● Japanese language courses

Japanese language classes for international students are offered at various levels in order to help them pursue their academic goals.

International students at Gunma University are encouraged to take Japanese classes in accordance with their individual levels. GUIC offers two Japanese programs: Preliminary Intensive Japanese Language Courses for Japanese Government Scholarship Students, and "Japanese Language & Japanese Studies" classes are offered as elective liberal art subjects for registered undergraduate international students. Supplementary Japanese classes may be offered for graduate/research students.



GU Data 2019

Faculties

As of April 1, 2019

Faculties	Departments etc.	Admission Capacity	Capacity	Present Enrollment Number																							
				1st year			2nd year			3rd year			4th year			5th year			6th year			Total					
				Male	Female	Total	Male	Female	Total	Male	Female	Total	Male	Female	Total	Male	Female	Total	Male	Female	Total	Male	Female	Total			
Faculty of Education	Course in School Education	220	880	108	126	234	110	127	237	97	131	228	111	134	245										426	518	944
Faculty of Social and Information Studies	Social and Information Studies	100 (20)	440	47	55	102	43	59	102	65	64	129	64	65	129										219	243	462
	Information Behavioral Science												7	3	10										7	3	10
	Information Social Science												3	3											3	—	3
	Sub total	100 (20)	440	47	55	102	43	59	102	65	64	129	74	68	142										229	246	475
Faculty of Medicine	School of Medicine	108 [15]	723	76	32	108	100	44	144	87	52	139	78	34	112	95	43	138	81	37	118	517	242	759			
	School of Health Sciences	160 (10)	660	26	139	165	34	126	160	34	134	168	29	135	164										123	534	657
	Sub total	268 [15] (10)	1,383	102	171	273	134	170	304	121	186	307	107	169	276	95	43	138	81	37	118	640	776	1,416			
School of Science and Technology	Chemistry and Chemical Biology	160	640	102	75	177	87	81	168	88	89	177	86	82	168										363	327	690
	Mechanical Science and Technology	110	440	111	15	126	108	10	118	129	7	136	123	7	130										471	39	510
	Environmental Engineering Science	90	440	73	21	94	79	19	98	70	21	91	80	27	107										302	88	390
	Electronics and Informatics	120	480	111	16	127	105	17	122	148	18	166	134	11	145										498	62	560
	Integrated Science and Technology*	30	120	26	5	31	30	5	35	18	9	27	16	13	29										90	32	122
Faculty of Engineering	Day Course	Chemistry and Chemical Biology																							—	—	—
		Mechanical System Engineering								1	1														1	—	1
		Production Science and Technology											1	1											1	—	1
		Chemical and Environmental Engineering																							—	—	—
		Civil and Environmental Engineering											1	1											1	—	1
		Electronic Engineering																							—	—	—
		Computer Science																							—	—	—
	Evening Course	Production Science and Technology											3	3											3	—	3
	Sub total	510(30)	2,040 [60]	423	132	555	409	132	541	454	144	598	444	140	584										1,730	548	2,278
	Total	1,098 [15] (60)	4,743 [60]	680	484	1,164	696	488	1,184	737	525	1,262	736	511	1,247	95	43	138	81	37	118	3,025	2,088	5,113			

Note: The Number in Parentheses [] indicate the transfer student admission capacity into the 2nd year and is not included in the total. The Number in Parentheses () indicate the transfer student admission capacity into the 3rd year and is not included in the total. A total of the transfer students are admitted to the School of Science and Technology and Quotas for these students are not assigned to each department. The Number in Parentheses [] indicate the common admission capacity in ST all departments and is not included in the total.
 ※ Evening Course (Flexible System)

Graduate Schools

As of April 1, 2019

Graduate Schools	Courses	Admission Capacity	Capacity	Present Enrollment Number																			
				1st year			2nd year			3rd year			4th year			5th year			Total				
				Male	Female	Total	Male	Female	Total	Male	Female	Total	Male	Female	Total	Male	Female	Total	Male	Female	Total		
Graduate School of Education	Master's Program	Education for individuals with Special Needs	3	6	2	1	3	2	3	5									4	4	8		
		Education Practice in Specialized Subjects	20	40	12	6	18	14	9	23									26	15	41		
		Sub total	23	46	14	7	21	16	12	28									30	19	49		
	Professional Degree Course	Leadership in Education	16	32	7	5	12	7	8	15									14	13	27		
	Total	39	78	21	12	33	23	20	43									44	32	76			
Graduate School of Social and Information Studies	Social and Information Studies Master's program	14	28	2	2	4	8	8	16									10	10	20			
Graduate School of Medicine	Master's Program	Biochemical Sciences	15	30	2	4	6	6	4	10								8	8	16			
	Doctoral Program	Medical Sciences	57	228	35	17	52	47	14	61	30	19	49	69	34	103		181	84	265			
	Total	72	258	37	21	58	53	18	71	30	19	49	69	34	103		189	92	281				
Graduate School of Health Sciences	Master's Program	Health Sciences	50	100	22	16	38	35	32	67								57	48	105			
	Doctoral Program	Health Sciences	10	30							7	5	12	6	4	10	9	22	31	22	31	53	
	Total	60	130	22	16	38	35	32	67	7	5	12	6	4	10	9	22	31	79	79	158		
Graduate School of Science and Technology	Master's Program	Material and Bioscience	300	600	69	30	99	69	35	104									138	65	203		
		Mechanical Science and Technology			83	1	84	85	5	90										168	6	174	
		Environmental Engineering Science			48	7	55	41	7	48											89	14	103
		Electronics and Informatics, Mathematics and Physics			84	7	91	80	8	88											164	15	179
		Sub total			300	600	284	45	329	275	55	330									559	100	659
	Doctoral Program	Material and Bioscience	39	117							2	1	3	5	6	11	6	5	11	13	12	25	
		Mechanical Science and Technology			7	1	8	8	1	9	9									9	24	2	26
		Environmental Engineering Science			2		2	7	2	9	7	6	13	16	8	24							
		Electronics and Informatics, Mathematics and Physics			4	1	5	3		3	6	1	7	13	2	15							
		Sub total			39	117	-	-	-	-	-	-	15	3	18	23	9	32	28	12	40	66	24
Total	339	717	284	45	329	275	55	330	15	3	18	23	9	32	28	12	40	625	124	749			
Graduate School of Engineering	Doctoral Program	Engineering														3		3	3	-	3		
	Total															3		3	3	-	3		
by program	Master's Program		402	804	324	74	398	340	111	451								664	185	849			
	Doctoral Program		106	375	35	17	52	47	14	61	52	27	79	98	47	145	40	34	71	272	139	411	
	Professional Degree Course		16	32	7	5	12	7	8	15								14	13	27			
Total		524	1,211	366	96	462	394	133	527	52	27	79	98	47	145	40	34	71	950	337	1,287		

GU Data 2019

Graduate Course

As of April 1, 2019

Graduate Course	Courses	Admission Capacity	Capacity	Present Enrollment Number		
				Male	Female	Total
Special Graduate Course of Special Education	Education for the Multiply Handicapped	15	15	2	12	14

International Exchange Agreements

Agreement between Universities
 Agreement between Faculties

Country/ Region	Universities	Date of Agreement	
Asia			
CHINA	X'ian Jiaotong University	Dec. 4, 2001	
	Xianmen University	Sep. 19, 2002	
	Shenyang University of Chemical Technology	Mar. 31, 2003	
	North China Electric Power University	May. 22, 2005	
	Dalian Medical University	Jul. 12, 2007	
	Dalian University of Technology	Jan. 30, 2007	
	Dalian Polytechnic University	Sep. 26, 2007	
	Institute of Process Engineering, Chinese Academy of Science	Jul. 16, 2008	
	Chongqing Jiaotong University	Mar. 25, 2009	
	Hainan University	Jul. 29, 2009	
	The College of Life Sciences of Nankai University	Nov. 2, 2002	
	College of Life Science of Inner Mongolia University	Feb. 13, 2007	
	Hefei University of Technology	Feb. 23, 2008	
	Shanghai Jiao Tong University	Mar. 25, 2008	
	School of Optic and Electronic Engineering, University Shanghai for Science and Technology	Jul. 28, 2008	
	China University of Mining and Technology	Jan. 23, 2009	
	School of Sciences, Northeastern University	Feb. 28, 2009	
	Southwest Jiaotong University	Jul. 1, 2009	
	Hunan University of Science and Technology	Oct. 16, 2009	
	Hebei University of Technology	Mar. 20, 2010	
	School of Energy and Power Engineering, Yangzhou University	Jun. 26, 20012	
	College of Information Engineering, Yangzhou University	Mar. 8, 2013	
	School of Optoelectronics and Communication Engineering, Xiamen University of Technology	Jul. 22, 2013	
	School of Precision Instrument and Opto-Electronics Engineering, Tianjin University	Nov. 7, 2014	
	College of Biology, Hunan University	Jan. 6, 2016	
	China-Japan Friendship Hospital	Jan. 21, 2016	
	Capital Medical University	Apr. 19, 2016	
	School of Mechanical Engineering, Yangzhou University	May. 16, 2016	
	Jiangsu University of Science and Technology	Oct. 17, 2016	
	Institute of Urban Environment , Chinese Academy of Science	Mar. 23, 2017	
	Fudan University	Apr. 13, 2017	
	Zhejiang University of Technology	Apr. 10, 2017	
	School of Chemistry and Chemical Engineering Shandong University	Apr. 23, 2017	
	School of Nursing , Peking Union Medical College	Dec. 30, 2018	
	KOREA	Yeungnam University	Sep. 5, 2003
		Konkuk University	Mar. 6, 2007
		Korea Institutie of Radiological and Medical Science	Oct. 18, 2007
		Seoul National University	Oct. 27, 2008
		Pusan National University	Jun. 22, 2016
		Honmone Research Center, Chonnam National University	Dec. 4, 1996
		Graduate School of Industry and Engineering, Seoul National University of Sceice and Technology	Jan. 1, 2009
		Research and Engineering Center for Advances Silicon Materials, Korea	Feb. 3, 2009
		Nano-Science Research Division, Korean Institute of Science and Technology	Feb. 5, 2009
		Center for Photofunctional Energy Materials, Dankook University	May. 22, 2009
		College of Engineering Kyung Hee University	Dec. 14, 2009
		College of Science and Technology, Yonsei University	May. 2, 2012
		College of Sceice and Technology, Yonsei	Jan. 30, 2013
		Chungnam National University	Aug. 11, 2015
Inje University		Feb. 29, 2016	
Daegu University		Mar. 29, 2016	
Seoul National University Hospital		Jul. 2, 2018	
KAIST Institute for Information Technology Convergence		Dec. 13, 2018	
TAIWAN	Tunghui University	Jun. 27, 2003	
	National Taipei University of Education	oct. 24, 2006	
	National Formosa University	Jan. 21, 2013	
	College of Engineering of Lughwa University of Science and Technology	Dec. 13, 2006	
	National Chin-Yi University of Technology	May. 27, 2014	
	National Chin-Yi University of Technology	Apr. 30, 2015	
	Shih Hsin University	Dec. 28, 2015	
	College of Engineering of National Chiao Tung University	Jan. 2, 2018	
College of Engineering and College of Science, National Central University	Jan. 8, 2018		
PHILIPPINES	University of the Philippines Manila	Feb. 16, 2009	
MONGOLIA	Health Sciences University of Mongolia	Aug. 5, 2012	
INDIA	Hindustan Institute of Technology and Science	Jun. 5, 2018	
	Institute of Engineering and Technology Chitkara University	Jun. 6, 2018	
MALAYSIA	Universiti Kebangsaan Malaysia	Feb. 23, 2009	
	Institute of Technology Petronas Sdn. Bhd.	Jul. 30, 2013	
	Universiti Malaysia PAHANG	Sep. 9, 2014	
	Universiti Teknologi MARA (Terengganu)	Jun. 5, 2015	
	Universiti Teknika Malaysia Melaka, Faculty of Electronic and Computer Engineering	Sep. 22, 2018	
VIETNAM	Hanoi University of Technology	Jan. 23, 2008	
	Hanoi Irradiation Center, Vietnam Atomic Energy institute	Feb. 23, 2013	
	Hanoi National University of Education	Feb. 8, 2017	
INDONESIA	Universitas Padjadjaran	Sep. 20, 1996	
	Indonesia University of Education	Mar. 16, 2009	
	Institute Teknologi Bandung	Oct. 11, 2010	
	Universitas Negeri Jakarta	Jul. 13, 2016	
SINGAPORE	Department of Science Institute Teknologi Sumatera	May. 12, 2017	
	Nanyang Technological University	Mar. 20, 2015	

Country/ Region	Universities	Date of Agreement
BANGLADESH	University of Dhaka	Dec. 12, 2010
	School of Engineering, Daffodil International University	Feb. 8, 2017
	School of Science and Information Technology, Daffodil International University	Feb. 8, 2017
THAILAND	Chiang Mai University	Sep. 11, 2007
	King Mongkut's Institute of Technology, Ladkrabang	Dec. 12, 2008
	Rajamangala University of Technology Isan	Mar. 26, 2009
	Thai-Nichi Institute of Technology	Jul. 21, 2009
	Mahidol University	Feb. 22, 2011
	Faculty of Science and Technology, Nakhon Pathom Rajabhat University	Feb. 2, 2012
	Faculty of Engineering, Chulalongkorn University	Dec. 4, 2012
	King Mongkut's Institute of Technology, Tombri	May. 10, 2013
	Rangsit University	Jan. 7, 2016
	Rajamangala University of Technology Isan	May. 12, 2017
	Faculty of Industry and Technology Rajamangala University of Technology	May. 12, 2017
	Faculty of Natural Resources Rajamangala University of Technology	May. 12, 2017
Faculty of Agriculture and Technology Rajamangala University of Technology	May. 12, 2017	
Faculty of Science and Liberalarts Rajamangala University of Technology	May. 12, 2017	
Europe		
HUNGARY	Karoli Gaspar University of the Reformed Church	Mar. 17, 2010
SLOVENIA	University of Ljubljana	Sep. 19, 2008
GERMANY	GSI Helmholtzszentrum für Schwerionenforschung GmbH, Germany	Nov. 18, 2008
	The Heart and Diabetes Center NRW, Clinic for Thoracic and Cardiovascular Surgery, Faculty of Medicine, Ruhr-Universität Bochum	Sep. 3, 2014
FRANCE	Heidelberg Ion Therapy Center , Heidelberg University	Jun. 26, 2018
	Université de La Méditerranée, Aix-Marseille II	Jul. 25, 2005
	National Graduate School of Chemistry and Chemical Engineering, The University of Montpellier	Feb. 11, 2009
	Ecole Supérieure D'ingénieurs en Electrotechnique et Electronique Paris	Apr. 20, 2016
	ESIEE Paris	Apr. 12, 2017
ITALY	University of Montpellier, Montpellier Cancer Institute, National Institute of Health and Medical Research, Institute of Cancer Research of Montpellier	Apr. 10, 2017
AZERBAIJAN	L'Università de Firenze	Apr. 16, 2003
POLAND	Baku State University	Jan. 27, 2009
SWEDEN	Jagiellonian University	Mar. 29, 2012
CZECH REPUBLIC	School of Engineering, University of Boras	Feb. 22, 2012
	Department of Medical Biochemistry and Biophysics, Karolinska Institutet	Nov. 11, 2012
SPAIN	Technical University of Ostrava	Oct. 29, 2015
AUSTRIA	Universidad Politecnica de Valencia	Feb. 19, 2014
CROATIA	Department of Radiotherapy, Medical University of Vienna, Heavy Ion Medical Center	Apr. 14, 2014
BELGIUM	Faculty of Humanities and Social Sciences, University of Zagreb	Jul. 2, 2014
	Faculty of Medicine, University of Liège	Oct. 2, 2014
LITHUANIA	Depart of Chemical Engineering, University of Liege	Aug. 14, 2015
	Vytautas Magnus University	Oct. 25, 2018
North America		
CANADA	Ryerson University	Sep. 28, 2012
	North Dakota State University	May. 27, 2010
	San Diego State University	Mar. 3, 2011
	State University of New York at Stony Brook	Jul. 12, 2013
UNITED STATES OF AMERICA	Francis H. Burr Proton Therapy Center, Massachusetts General Hospital	May. 6, 2008
	Department of Radiation Oncology, Mayo Clinic Rochester d/b/a Mayo Clinic	Oct. 23, 2008
	Graduate School, University of Puget Sound	Oct. 3, 2011
	Missouri State University	Mar. 6, 2015
	Morehead State University	Dec. 16, 2015
NEW ZEALAND	Fort Lewis College	Apr. 26, 2018
	Adams State University	Feb. 18, 2019
	Department of Radiation Oncology , The Ohio State University James Center Hospital	Oct. 30, 2018
Latin and South America		
NICARAGUA	The National Autonomous University of Nicaragua (UNAN-Managua)	Jul. 1, 2005
COLOMBIA	Universidad de La Sabana	Apr. 20, 2009
Oceania		
AUSTRALIA	University of Wollongong	Jul. 15, 2014
NEW ZEALAND	University of Otago	Nov. 10, 2017

Number of International Students

By countries and regions

As of April 1, 2019

Regions	Classification Countries	Undergraduate Students		Graduate Students				Research Student				Exchange Students				Exchange Research Students		Sub total		Total
		Government Scholarship	Private Funding	Master's program		Doctoral Program		Undergraduates		Graduates		Undergraduates		Graduate		Government Scholarship	Private Funding	Government Scholarship	Private Funding	
				Government Scholarship	Private Funding	Government Scholarship	Private Funding	Government Scholarship	Private Funding	Government Scholarship	Private Funding	Government Scholarship	Private Funding	Government Scholarship	Private Funding					
Asia	China	1	14		47	4	18	1	9				6			1	6	95	101	
	Malaysia	1	34														1	34	35	
	Mongolia		3	2	4	4	15										6	22	28	
	Indonesia	5		1	1	3	10		1			2	2				11	14	25	
	Vietnam		7		5	2	2										2	14	16	
	Taiwan				2								8			1	—	11	11	
	Thailand					3	3										3	3	6	
	Korea		2		1					1							—	4	4	
	India						3										—	3	3	
	Nepal					2	1										2	1	3	
	Laos	1			1		1										1	2	3	
	Cambodia	1			1												1	1	2	
	Philippines	1															1	—	1	
		Sub total	10	60	3	62	18	53	1	10	—	1	2	16	—	—	—	2	34	204
Middle East	Syria					1											1	—	1	
	Sub total	—	—	—	—	1	—	—	—	—	—	—	—	—	—	—	—	1	—	1
Africa	Cote d'Ivoire	1			1											1	1	2	3	
	Egypt		1		1												—	2	2	
	Sub total	1	1	—	2	—	—	—	—	—	—	—	—	—	—	—	1	1	4	5
North America	U.S.A.											1					—	1	1	
	Sub total	—	—	—	—	—	—	—	—	—	—	1	—	—	—	—	—	1	1	
Latin and South America	El Salvador					1											—	1	1	
	Colombia											1					—	1	1	
	Sub total	—	—	—	—	—	1	—	—	—	—	1	—	—	—	—	—	2	2	
Europe	Azerbaijan								1			2					—	3	3	
	France														2		—	2	2	
	Poland								1			1					2	—	2	
	Hungary											1					1	—	1	
	Sub total	—	—	—	—	—	—	—	1	1	—	2	2	—	—	—	2	3	5	8
Total		11	61	3	64	19	54	1	11	1	1	4	20	—	—	—	5	39	216	255

By Faculties

Education		1		1			1		1	2	12						3	15	18
Social and Information Studies		2		13				5	1		2	6					3	26	29
Medicine		1	1	1	4	13	31	1			1						15	38	53
Health Sciences				2	2		2										2	4	6
Science and Technology		10	57		44	6	21	5			1					5	16	133	149
Molecular and Cellular Regulation																	—	—	—
Total		72		140				14			29					8		247	

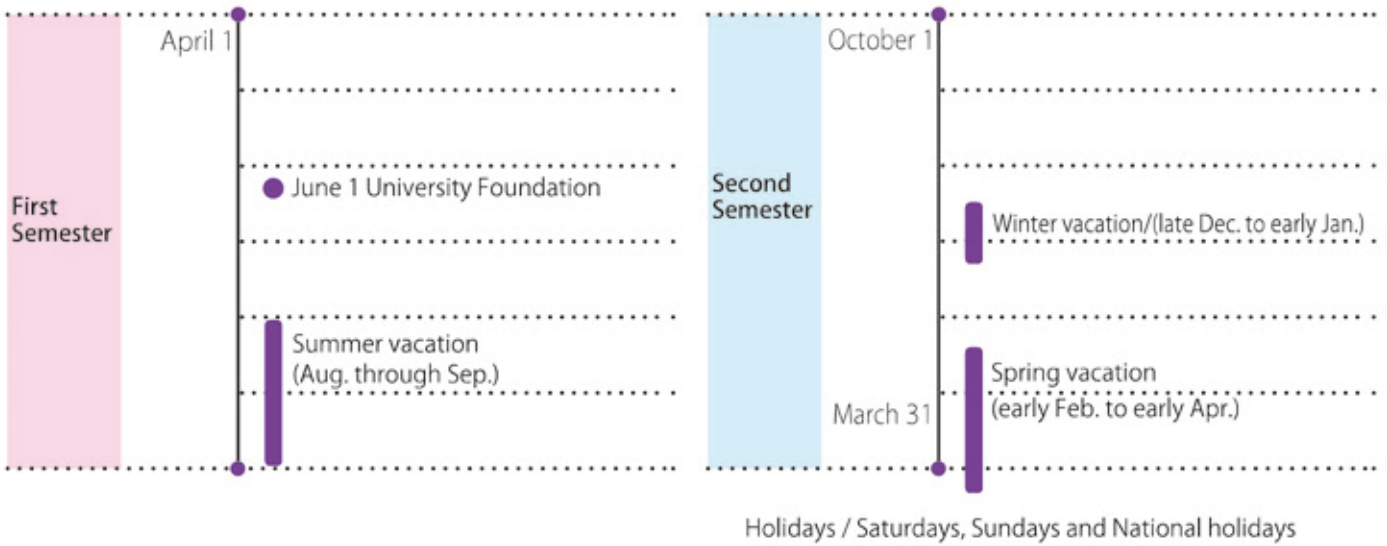
※ The number is included the student of Engineering.

Number of dispatched students

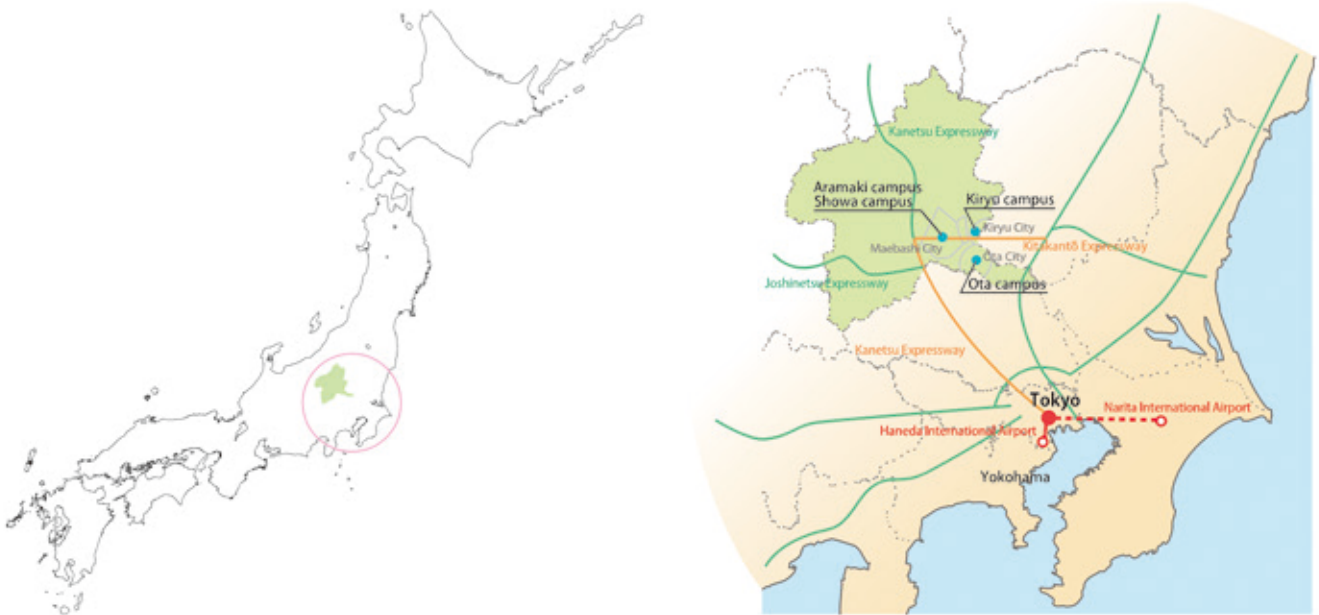
From April 2018 to March 2019

Regions	Countries	Faculty of Education	Graduate School of Education	Faculty of Social and Information Studies	Faculty of Medicine School of Medicine	Graduate School of Medicine	Faculty of Medicine School of Health Sciences	Graduate School of Health Sciences	School of Science and Technology	Graduate School of Science and Technology	Special Graduate Course of Special Education	Total		
Asia	Korea		32		2						1	35		
	China								7	14		21		
	Taiwan		12		1	5						18		
	Malaysia		2						11	1		14		
	Mongolia							7				7		
	Indonesia		2				4					6		
	Vietnam		2		1						1	4		
	Philippines							1		1		2		
	Thailand										1	1		
Oceania	Australia		16		1	7	2		11		18	55		
North America	America		17			4			9	1	3	34		
Latin and South America	Colombia						5					5		
Europe	United Kingdom				1	3			1		9	14		
	Germany								2		2	4		
	Slovenia		3									3		
	France										1	1		
Africa	Ghana								1			1		
Total			86		6	19	11	—	32	1	49	20	1	225

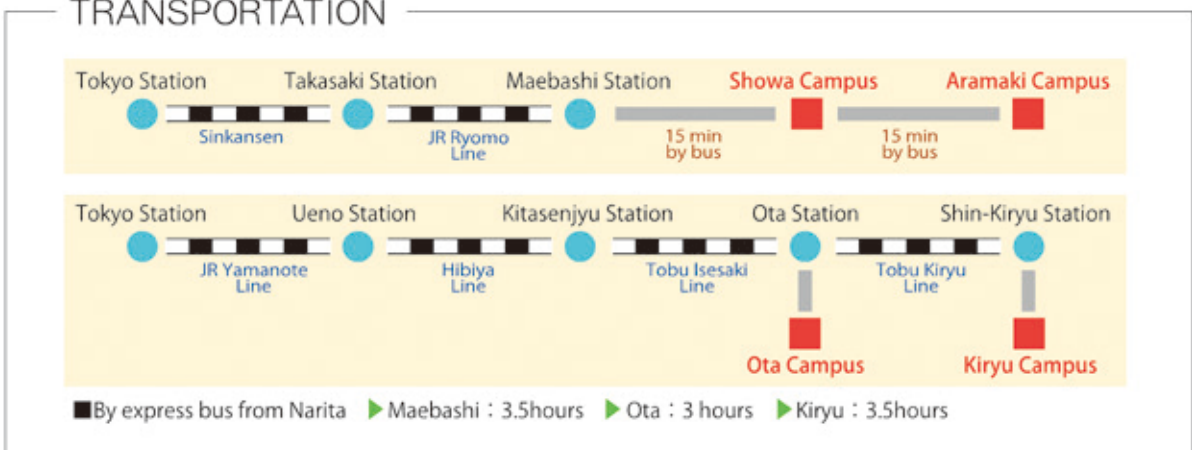
Academic Calendar



Campus Access Map



TRANSPORTATION





Gunma University
Official HP



Facebook



LINE



Instagram



Twitter



YouTube

Gunma University
Public Relations Office & International Office
4-2 Aramaki, Maebashi, Gunma 371-8510 JAPAN
URL <http://www.gunma-u.ac.jp/english/index-e2.html>
Publication October 2019