

[KUIS] Online Program Spring 2021 / 2021年度春学期オンラインプログラム

KUIS <international@kanda.kuis.ac.jp>

Thu 12/3/2020 11:24 PM

To: ONJIRA MANEEKARN <onjira.m@cmu.ac.th>

📎 1 attachments (2 MB)

KUIS Online Program Brochure.pdf;

Dear Partner,

Warm greetings from Kanda University of International Studies.

As is informed, we canceled the Spring 2021 exchange program. We sincerely hope the pandemic subsides soon so we can welcome international students again.

(1) Instead, in the spring semester of 2021, we will open an online program for students of our partner universities.

This program features learning the Japanese language and culture.

The tuition will not be applied to students of our partner universities.

For details, please refer to the brochure attached hereto, and the website below.

sites.google.com/kanda.kuis.ac.jp/bekkaspring2021/home-english

The application needs a nomination from your university.

The number of acceptable nominees from your university is as below.

This is such short notice, but if you have appropriate candidates, we would kindly like to request you nominate them by 15:00 (JST) January 3rd, 2021 by filling in the nomination form on the website.

Nomination can be done in the "Nomination and Application" page of the website above.

Your university: Chiang Mai University- Faculty of Education

Number of nominees: 1

If you have inquiries, please feel free to contact us.

We are looking forward to meeting your students online.

(2) Our university, too, has a huge number of students, who wish to study abroad but are unable to do because of COVID-19.

As an alternative solution, we are looking for opportunities for students to attend lectures online, especially in academic courses.

We once again request you to provide us with any information related to this matter if you have.

Please fill in this form to answer the question.

<https://forms.gle/2dDUWmWG4KwMgyEQ7>

Global Engagement and Partnership Division

Strategic Planning

Kanda University of International Studies

เรียน ผู้ช่วยคณบดี (ผศ.ดร.บุษรี เพ็งเล็งดี)
ผ่าน อ.ดร.ภักดีกุล รัตนา ปฏิบัติการแทนคณบดีในงานวิเทศสัมพันธ์

เพื่อโปรดทราบ เรื่อง Kanda University of International Studies ประเทศญี่ปุ่น
ประชาสัมพันธ์โครงการแลกเปลี่ยนนักศึกษา Japanese Language and Culture
Program (Bekka Program) Online Program Spring 2021 ระหว่างวันที่ 7 เม.ย. –
27 ก.ค. 2564 เพื่อลงทะเบียนเรียนในรายวิชาที่กำหนดผ่านระบบออนไลน์ ระยะเวลา
15 สัปดาห์ การเรียนการสอนส่วนใหญ่เป็นภาษาญี่ปุ่นและภาษาอังกฤษในบางรายวิชา
คุณสมบัติผู้สมัคร - มีอายุ 18 ปีขึ้นไป

- คาดว่าจะเข้าร่วมหลักสูตรที่ลงทะเบียนไว้ตลอดภาคการศึกษา
- จะต้องมียกขะภาษาญี่ปุ่นในระดับสื่อสารได้ ทั้งจากการศึกษา
ในชั้นเรียนหรือศึกษาด้วยตนเอง (เทียบเท่า JLPT N5 เป็นอย่างน้อย
และสามารถแสดงหลักฐานได้เมื่อร้องขอ)
- นักศึกษาที่ได้รับการเสนอชื่อจะต้องทดสอบภาษาญี่ปุ่นเพื่อวัดระดับ
ก่อนลงทะเบียนเรียน (ระดับ 2 : Beginner - ระดับ 7: Advanced)

ทั้งนี้ ผู้ที่ได้รับการคัดเลือก จำนวน 1 ราย จะได้รับการยกเว้นค่าธรรมเนียมการศึกษา
รายละเอียดดังแนบ

เห็นควรปิดประกาศ ประชาสัมพันธ์ลงในเว็บไซต์ของหน่วยวิเทศสัมพันธ์ และ
Facebook ของคณะฯ ผู้ที่สนใจสืบค้นข้อมูลเพิ่มเติมได้ที่ <https://cmu.to/ZXTLA> หรือ
ตาม QR Code ที่ปรากฏ หากประสงค์จะสมัครเข้าร่วมโครงการดังกล่าว โปรดแจ้งมายัง
หน่วยวิเทศสัมพันธ์ คณะฯ ภายในวันที่ 23 ธ.ค. 2563



อรจิรา.
7 ธ.ค. 2563
อ.บุษรี
อ.ภักดีกุล
อ.นันทิยา
8 ธ.ค. 63

ทราบ ดำเนินการตามเสนอ

ข้อความคำสั่ง (ถ้ามี)

.....
.....
.....

(ผู้ช่วยศาสตราจารย์ ดร.บุษรี เพ็งเล็งดี)

ผู้ช่วยคณบดี

8 ธ.ค. 63



KANDA UNIVERSITY OF INTERNATIONAL STUDIES

JAPANESE LANGUAGE AND CULTURE PROGRAM (BEKKA PROGRAM)

ONLINE PROGRAM SPRING 2021



STUDY WITH US ANYWHERE IN THE WORLD !



We open online Japanese-learning courses in the Spring semester 2021. Class sizes are kept small (usually around 10 students) to maximize interaction between students and instructors. Learning Japanese language and culture is the main content of this program as well as various opportunities for interaction with Japanese students.

APPLICATION REQUIREMENTS

This program is only open to international students from partner institutions.

- Applicants must have completed at least 12 years of formal schooling. If not, applicants must be 18 years old or older at the start of the Japanese Language and Culture Program (Bekka Program) and have passed an examination which proves that applicants have attained the same or higher academic level as 12 years of formal schooling.
 - Applicants must be enrolled at their home university during this program.
 - Students are expected to attend the courses throughout the semester.
- Make sure to sign up for courses which can be completed.

PROGRAM OUTLINE

Schedule	15 weeks (from April 7 –July 27) * The schedule may be revised
Tuition	Not applicable to students from partner institutions
Course Delivery	Online synchronous teaching in principle No videos or recorded materials available
Class hours *Japan Standard Time	1 period = 90 mins (1) 9:00-10:30 (2) 10:40-12:10 (3) 14:50-16:20 (4) 16:30-18:00
Courses Offered (TBD) Details of the courses offered will be announced at a later date.	<ul style="list-style-type: none"> •Interaction with Japanese 2•3•4•5•6•7 •Self-Directed Learning 2•3•4•5•6 •Reading and Listening 2•3 •Pronunciation 2•3•4•5•6 •Written Expression 4•5•6•7 •Introduction to Japanese Society 2•3•4•5•6•7 •Introduction to Japanese Business Culture 4•5•6•7 •Journalistic Japanese 6•7 •Japanese Sociolinguistics
Course Language	Mostly in Japanese
Platform	Zoom, Google etc.
Website	https://sites.google.com/kanda.kuis.ac.jp/bekkaspring2021

CONTACT

GLOBAL ENGAGEMENT AND PARTNERSHIP DIVISION

International@kanda.kuis.ac.jp

JAPANESE LANGUAGE REQUIREMENT AND CLASS PLACEMENT



Students are required to have at least the following Japanese proficiency and have to be currently learning Japanese (attending classes or self-study). No introductory courses (Level 1) for novice learners are available.

- JLPT N5 or
- CEFR A1 or
- Completed "みんなの日本語初級 I" or "初級日本語げんき I" or equivalent

Students will take comprehensive placement tests and will be placed in a class at the appropriate Japanese language level (Level 2 : Beginner - Level 7: Advanced). Details on how to take the placement tests will be explained later.

The courses available vary depending on the class level.

CREDIT SYSTEM



Attendance required for grade calculation

As a general rule, grades will be F if a student has been absent from the course more than the one third.
Being late and/or leaving early from class three times will be counted as one absence.

For a detailed explanation of the grading policy for each class, please read the course syllabus provided at a later date.

Calculation of credit

["Interaction with Japanese"]
1 credit corresponds to 1,350 minutes.

e.g.:" Interaction with Japanese "
= 3 Credits

1 period(90mins)×3 times per week×15 weeks = 4050 contact minutes.

[Other courses]
1 credit corresponds to 675 minutes.



Grades

Results will be expressed in one of the following 5 grades: A+, A, B, C, or F.

The corresponding standards are shown to the right. →

	Pass				Fail
Letter Grade	A+	A	B	C	F
Numerical Grade	100 -	89 -	79 -	69 -	59 -
	90	80	70	60	0
Grade Point	4	3	2	1	0

REQUIRED ENVIRONMENT



To participate in this program, it is essential to have minimum technology requirements.

- A laptop or desktop computer
- A stable internet connection (Wired connections are recommended.)
- A webcam and a microphone (Built-in / external)
- Speakers
- The latest version of Computer Applications (Zoom, Google etc)



JST = Japan Standard Time
 EST = Eastern Standard Time
 PST = Pacific Standard Time
 CET = Central European Time

CLASS SCHEDULE

(M) = Morning class
 (A) = Afternoon class

		Mon	Tue	Wed	Thu	Fri
Morning class	① JST 9:00-10:30 EST 19:00-20:30 PST 16:00-17:30 CET 01:00-02:30	Interaction with Japanese (M) 2~7	Introduction to Japanese Business Culture(M) 4・5 Introduction to Japanese Business Culture(M) 6・7	Interaction with Japanese (M) 2~7	Reading and Listening(M)2・3 Written Expression(M) 4・5 Written Expression(M) 6・7	Interaction with Japanese (M) 2~7
	② JST 10:40-12:10 EST 20:40-22:10 PST 17:40-19:10 CET 02:40-04:10		Pronunciation(M) 2・3 Pronunciation(M) 4・5・6	Self-Directed Learning(M) 2・3 Self-Directed Learning(M) 4・5・6	Journalistic Japanese (M)6・7	Introduction to Japanese Society(M) 2・3・4 Introduction to Japanese Society(M) 5・6・7
Afternoon class	③ JST 14:50-16:20 EST 0:50-02:20 PST 21:50-23:20 CET 06:50-08:20	Interaction with Japanese (A) 2~7	Introduction to Japanese Business Culture(A) 4・5 Introduction to Japanese Business Culture(A) 6・7	Interaction with Japanese (A) 2~7	Reading and Listening(A)2・3 Written Expression(E) 4・5 Written Expression(E) 6・7	Interaction with Japanese (A) 2~7
	④ JST 16:30-18:00 EST 02:30-04:00 PST 23:30-01:00 CET 08:30-10:00		Pronunciation(A) 2・3 Pronunciation(A) 4・5・6 Japanese Sociolinguistics	Self-Directed Learning(A) 2・3 Self-Directed Learning(M) 4・5・6	Journalistic Japanese(A) 6・7	Introduction to Japanese Society(A) 2・3・4 Introduction to Japanese Society(A) 5・6・7

CLASS LEVEL

	Level 2	Level 3	Level 4	Level 5	Level 6	Level 7
Required level at the time of the semester starts	Equivalent to JLPT N5 Completed the first half of the beginner level	Equivalent to JLPT N4 Completed the second half of the beginner level	Equivalent to JLPT N3 Completed the first half of the intermediate level	Equivalent to JLPT N3-N2 Completed the second half of the intermediate level	Equivalent to JLPT N2-N1 Completed the first half of the advanced level	Equivalent to JLPT N1 Completed the second half of the advanced level

COURSE REGISTRATION RULES



Courses are held twice in the morning (M) and afternoon (A) with the SAME CONTENT.

Choose either Morning class (M) or Afternoon class(A) and attend only the registered one. Choose the one that is convenient for you, considering the time difference and the schedule of your university. It is not possible to register for the same course both in the morning and afternoon.

e.g : Pronunciation(M) 2・3 and Pronunciation(A) 2・3 offer the same content. You can not register both.

"Interaction with Japanese " is the core course.

***Attendance required at all classes (3 periods per week)**

Although it is not necessary to sign up for it, it is strongly recommended if the schedule allows.

"Interaction with Japanese" needs attending three times a week (Mon, Wed, Fri), while other courses basically meet once a week.

Attending only certain classes of the week is not acceptable.

Choose courses based on your level.

Student must register for the courses corresponding to their level.

e.g: Student placed in level 3 can take the course that says "3" in the course name, such as "Pronunciation2・3", "Introduction to Japanese Society 2・3・4"

There is no level setting in "**Japanese Sociolinguistics**", so students of all levels can take this course. However, lectures will be mainly delivered in English, so competence in reading and speaking in English is required.

For more details, please check the course description.

**The capacity of a class
(Usually around 10 students)**

If the number of sign-ups exceeds the capacity of the course, students who can take the course will be selected randomly (no first-come-first-served basis).

Take the registered courses until the end of the semester.

Please attend the registered courses until the end of the semester.

However if you wish to drop out of the courses for special reasons before completion, please contact us by email at international@kanda.kuis.ac.jp .

EXTRACURRICULAR ACTIVITIES

*Under
planning



PEER TUTORING (KAEDE MATE PROGRAM)



Exchange students can join a peer tutoring system offered by KUIS students called Kaede Mate, who are interested in multicultural interaction. Exchange student will be paired with a KUIS student volunteer to practice Japanese and learn the culture each other.

What is the purpose?

To increase the time of using Japanese
To output what you learned in your class
To learn young people's language and culture

When?

Once a week, one hour

Detailed information will be given during the orientation period.



ONLINE LANGUAGE AND CULTURAL EXCHANGE WITH KUIS GLOBAL AMBASSADOR (KGA) STUDENTS

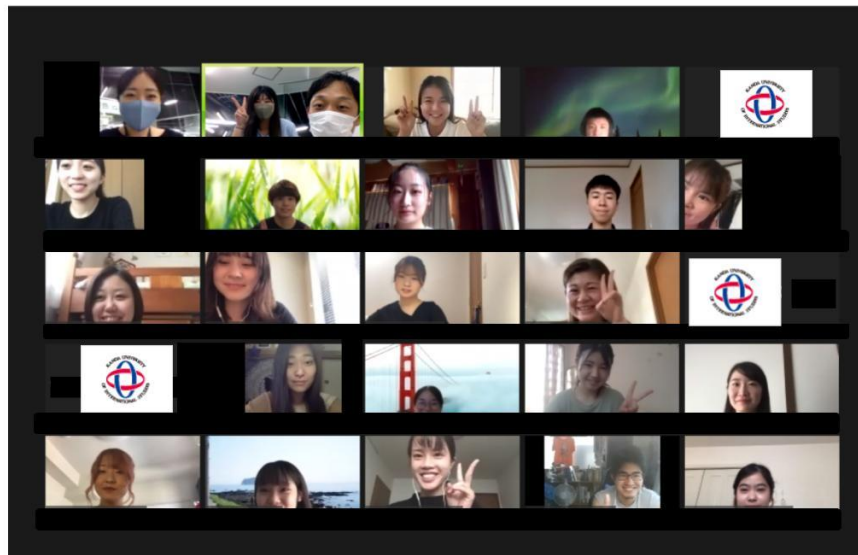


KUIS Global Ambassador (KGA) is a group of students organized by Kanda University of International Studies.

KGA students consist of those who are interested in studying abroad, and/or who are eager to interact with students of the partner universities and will autonomously organize a series of activities related to Study Abroad.

We welcome exchange students to join this activities presented by KGA students.

Detailed information will be given as decided.



MORE DETAILS AND APPLICATION



<https://sites.google.com/kanda.kuis.ac.jp/bekkaspring2021>

