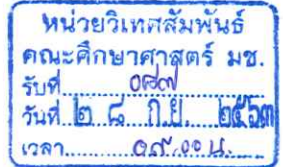




# บันทึกข้อความ



ส่วนงาน กองวิเทศสัมพันธ์ สำนักงานมหาวิทยาลัย มหาวิทยาลัยเชียงใหม่ โทร. 43668

ที่ อว 8392 (7)/ วันที่ กันยายน 2563

เรื่อง ขอความอนุเคราะห์ประชาสัมพันธ์โครงการแลกเปลี่ยน Spring 2021, Chonnam National University

เรียน ผู้อำนวยการกองวิเทศสัมพันธ์

## สรุปเรื่อง

Chonnam National University สาธารณรัฐเกาหลี ขอความอนุเคราะห์ประชาสัมพันธ์โครงการแลกเปลี่ยนสำหรับนักศึกษาระดับปริญญาตรีและบัณฑิตศึกษา Spring 2021 ณ Chonnam National University กำหนดจัดขึ้นระหว่างเดือนกุมภาพันธ์ - มิถุนายน 2564 นักศึกษาที่เข้าร่วมโครงการแลกเปลี่ยนจะได้รับการยกเว้นค่าธรรมเนียมการศึกษา สำหรับค่าใช้จ่ายอื่น ๆ นักศึกษาเป็นผู้รับผิดชอบด้วยตนเอง ทั้งนี้เนื่องจากปัจจุบันอยู่ในช่วงการระบาดของโควิด - 19 นักศึกษาต้องรับผิดชอบค่าใช้จ่ายในการกักตัววันละประมาณ 100,000 วอนต่อวัน เป็นระยะเวลา 14 วัน นักศึกษาที่สนใจสมัครเข้าร่วมโครงการแลกเปลี่ยน กรุณาส่งเอกสารการสมัครดังนี้

1. CV
2. Copy of Passport
3. Official Transcript
4. Certificate of Enrollment
5. English Language Proficiency Test (EPTUS, TOEFL, IELTS, TOEIC)
6. Study Plan
7. Passport Photo จำนวน 3 ใบ (35mm x 45mm)

นักศึกษาที่สนใจสามารถศึกษารายละเอียดเพิ่มเติมได้ที่ <http://international.inu.ac.kr/user/indexSub.action?codyMenuSeq=17436&siteId=international&menuUIType=tab> ห ม ด เ ข ต เสนอชื่อถึง Chonnam National University วันที่ 30 ตุลาคม 2563

## ข้อเสนอเพื่อพิจารณา

จึงเรียนมาเพื่อโปรดทราบและหากเห็นสมควรแจ้งคณะ วิทาลัย และบัณฑิตวิทยาลัยเพื่อประชาสัมพันธ์แก่ผู้สนใจต่อไป

อนา 370

## คำสั่ง

ที่ อว 8392 (7)/ 8.174 วันที่ 22 กันยายน 2563

เรียน ( ) เลขาธิการคณะ วิทาลัย บัณฑิตวิทยาลัย

( ) เพื่อโปรดทราบและโปรดพิจารณาประชาสัมพันธ์แก่ผู้สนใจ ทั้งนี้โปรดเสนอชื่อนักศึกษาผู้มีคุณสมบัติคณะละ 1 ราย พร้อมส่งเอกสารที่เกี่ยวข้องให้กองวิเทศสัมพันธ์ภายในวันที่ 16 ตุลาคม 2563 อนึ่ง เนื่องจากปัจจุบันอยู่ในช่วงการระบาดของไวรัส Covid-19 กองวิเทศสัมพันธ์จึงขอเรียนว่าหากนักศึกษาประสงค์เข้าร่วมโครงการแลกเปลี่ยน ขอให้คำนึงถึงความปลอดภัยและช่วงเวลาการเข้าร่วมกิจกรรม ตามประกาศของกระทรวงสาธารณสุขเป็นหลักด้วย จะขอบคุณยิ่ง

(นางสาววรลักษณ์ สุธีวรรณนา)  
ผู้อำนวยการกองวิเทศสัมพันธ์

เรียน ผู้ช่วยคณบดี (ผศ.ดร.บุษรี เพ่งเล็งดี)

ผ่าน อ.ดร.ภักดีกุล รัตนา ปฏิบัติการแทนคณบดีในงานวิเทศสัมพันธ์

เพื่อโปรดทราบ เรื่อง Chonnam National University (CNU) ประเทศเกาหลี  
ประชาสัมพันธ์โครงการแลกเปลี่ยนนักศึกษา Spring 2021 Exchange Program at  
CNU ให้แก่นักศึกษาระดับ ป.ตรี และบัณฑิตศึกษา กำหนดจัดขึ้นระหว่างเดือน ก.พ. -  
เดือน มิ.ย. 2564 (ต้องมีผลการทดสอบภาษาอังกฤษตามที่กำหนดประกอบการสมัคร)  
ทั้งนี้ ผู้ที่ได้รับการคัดเลือกจะได้รับการยกเว้นเฉพาะค่าธรรมเนียมการศึกษา แต่จะต้อง  
รับผิดชอบค่าใช้จ่ายอื่น ๆ ที่เกี่ยวข้อง ได้แก่ ค่าเดินทางระหว่างประเทศ ค่าที่พัก  
ค่าประกันสุขภาพและอุบัติเหตุ ค่าใช้จ่ายส่วนตัว ฯลฯ ด้วยตนเอง รายละเอียดดังแนบ

เห็นควรประชาสัมพันธ์ลงในเว็บไซต์ของหน่วยงานและ Facebook ของคณะฯ  
ผู้ที่สนใจสามารถศึกษารายละเอียดเพิ่มเติมได้ที่ <https://cmu.to/CIPAU> หรือตาม  
QR Code ที่ปรากฏ และหากประสงค์จะสมัครเข้าร่วมโครงการดังกล่าว โปรดยื่น  
ใบสมัครพร้อมด้วยเอกสารที่เกี่ยวข้องมายังหน่วยวิเทศสัมพันธ์ คณะฯ ภายในวันที่  
14 ต.ค. 2563 เพื่อดำเนินการต่อไป



อรจิรา.  
28 ก.ย. 63

อ.ดร.บุษรี  
เพ่งเล็งดี  
28 ก.ย. 63

☐ ทราบ ☒ ดำเนินการตามเสนอ  
ข้อความคำสั่ง (ถ้ามี)

(ผู้ช่วยศาสตราจารย์ ดร.บุษรี เพ่งเล็งดี)

ผู้ช่วยคณบดี

ก.ย. 63



2020

# Chonnam National University Exchange / Visiting Program





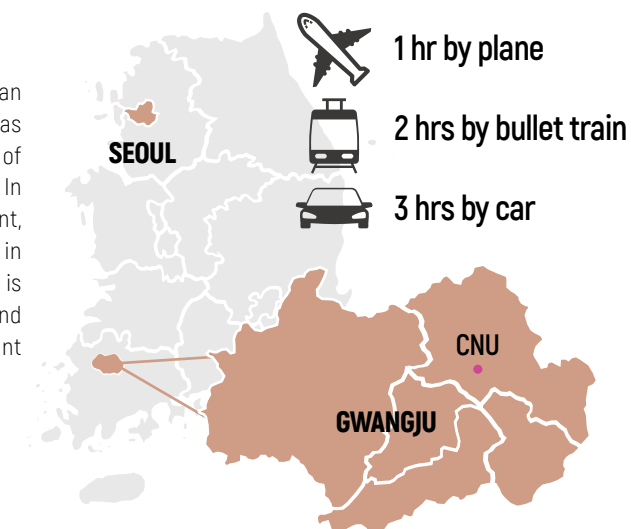
## City of Gwangju and Chonnam National University

### Gwangju

With a population of 1.5 million, Gwangju Metropolitan City is the 5th largest city in South Korea. Gwangju has never stopped playing a key role in the history of Korea's democracy and human rights movements. In particular, the May 18 Democratic Movement, Gwangju's uprising against the military dictatorship in early 1980's, set an example for the world. Gwangju is a city rich in culture and art, with exhibitions and performances all year around, making the city vibrant and colorful.



Gwangju is designated as an "International Safe Community" by World Health Organization (WHO)



### Chonnam National University

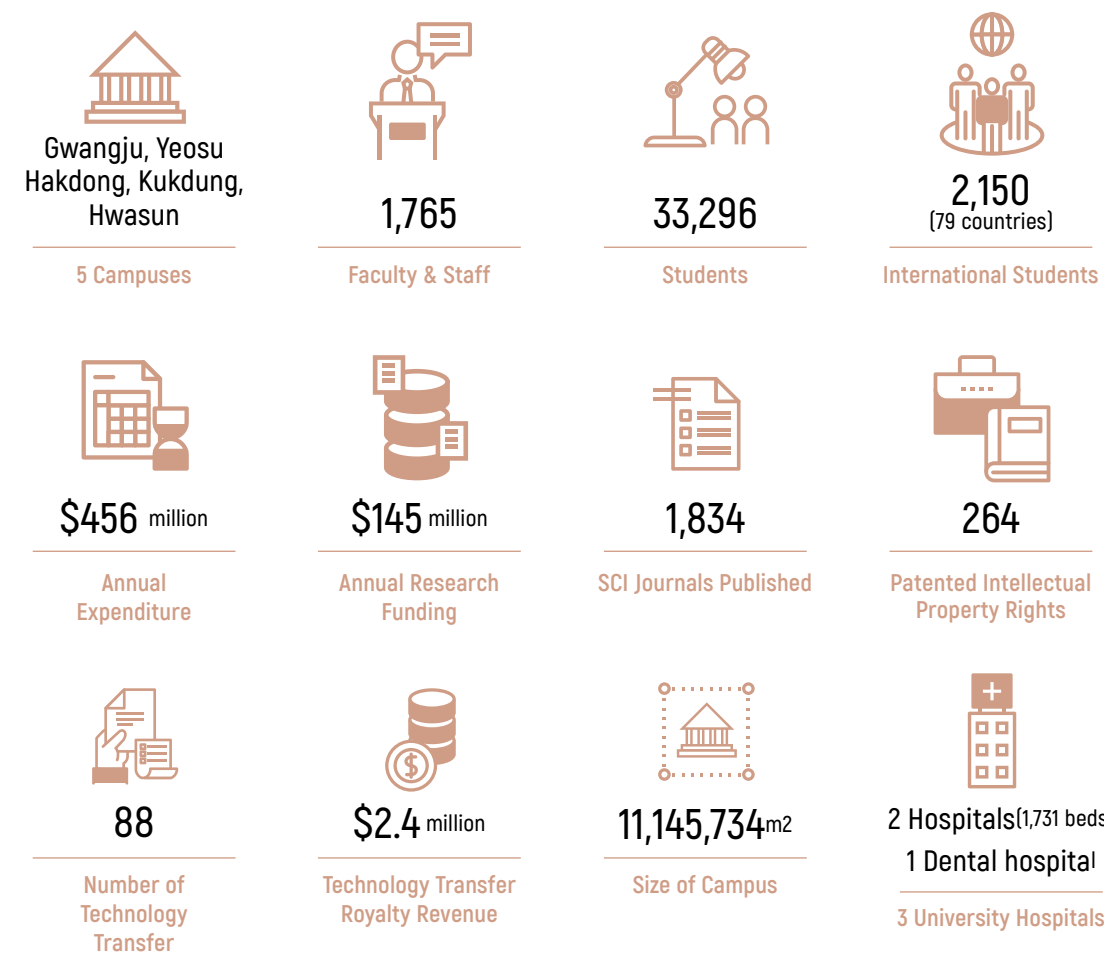
Founded in 1952, CNU has remained committed to fostering global leaders and professionals as one of Korea's most innovative universities with a reputation for its research, teaching, and leading in the local communities. Located in the Metropolitan City of Gwangju, CNU has 17 colleges and 11 graduate schools. With 2,200 academic staff members, it provides comprehensive education to 35,000 students including 2,150 international students from 79 different countries.

- ✎ Accredited by AACSB : College of Business Administration (2012-Present)  
AACSB : Association to Advance Collegiate Schools of Business
- ✎ Accredited by ABEEK: College of Engineering (2013-Present)  
ABEEK : Accreditation Board for Engineering Education of Korea
- ✎ Received IEQAS Accreditation from Ministry of Education in Korea (2012-Present)  
IEQAS: International Education Quality Assurance System





Statistics



Excellence in Education and Research: Proud CNU

Global and Domestic Accreditation

- Accredited by AACSB : College of Business Administration (2012-Present)  
AACSB : Association to Advance Collegiate Schools of Business
- Accredited by ABBEK : College of Engineering (2013-Present)  
ABBEK : Accreditation Board for Engineering Education of Korea
- Received IEQAS Accreditation from Ministry of Education in Korea (2012-Present)  
IEQAS : International Education Quality Assurance System

University Rankings and Recognitions

- Top National University for Research Grant (2018 Academyinfo)
- Ranked 1st in Assessment of Quality of Papers among National Flagship Universities (2018 Leiden Ranking)
- Ranked 1st among National Flagship Universities in Korea (2017 THE World University Rankings)
- Ranked 2nd in Job Placement Rate among National Flagship Universities (2017 Korean Educational Development Institute)
- CNU Business Incubation Center Selected as Excellent Institute for 6 Consecutive Years (2018 Ministry of SMEs and Startups)

Government Sponsored Programs

- CAMPUS-Asia AIMS(ASEAN International Mobility for Students) Host University (2016-Present KCUE, Korean Council for University Education in Korea)
- "GKS for Latin America countries' Science and Engineering Students" summer program Host University (2017-2020 NIIED, National Institute for International Education)
- "GKS for ASEAN countries' Science and Engineering Students" summer program Host University (2015 NIIED, National Institute for International Education)

Global Outreach Programs

- AUN(ASEAN+3 University Network) Membership University (2017-Present)
- USAC(University Studies Abroad Consortium) (2016-Present)

Around the Campus





## Chonnam National University Information Sheet for Academic Year 2019

### Contact details

	Name	Phone	Email Address
America/Australia Exchange	Ms. KANG Shinhye	+82 62 530 1273	shannon@chonnam.ac.kr
China Exchange	Ms. GU Jiyeon	+82 62 530 1274	jy9@chonnam.ac.kr
Europe/Africa Exchange	Ms. KIM Sola	+82 62 530 1270	sola5939@chonnam.ac.kr
Japan Exchange	Ms. PARK Eunjee	+82 62 530 1267	eunjee@chonnam.ac.kr
Asia Exchange	Ms. JEON Byeol	+82 62 530 1272	jeonbeyl@chonnam.ac.kr
Fax	+82 62 530 1269		
Mailing Address	Office of International Affairs Chonnam National University Global & Research Hub 2F, Room 214 77 Yongbong-ro, Buk-gu, Gwangju 61186, South Korea		

### Important dates

	Spring Semester(March - June)	Fall Semester(September - December)
Nomination Deadline	<b>October 30th</b>	<b>April 30th</b>
	A nomination form will be sent to the study abroad coordinators of partner universities via email. All exchange students need to be nominated from the home institution first before registering the CNU online application.	
Application Deadline	<b>November 20th</b>	<b>May 20th</b>
	The online application system will be closed right after deadlines set above. All required documents need to be uploaded to the system and CNU does not accept any paper documents via courier or email anymore.	

### Semester Programs

	Regular Exchange Program	Internship Program	Intensive Korean Language Program
Campus	Gwangju	Gwangju	Yeosu
Credits	3-18	12	18
Courses	Students may choose any courses offered from CNU except medicine/dentistry/veterinary medicine/English Education	Internship: 12 credits	Intensive Korean: 12 credits Korean related studies: 6 credits



# Nomination and Application



## Nomination

The CNU Office of International Affairs will email the nomination URL to all of our partner universities.

The home institutions will select qualified students, and fill out the online form with the following information on the form

- First and Last name, Gender, Major/Intended Area of Study, Birthdate (MM/DD/YY), Email address, CGPA, and intended Term of Study



## Application

CNU Office of International Affairs will email all nominated student(s) the URL for starting their online incoming exchange student application.

- Online-Application form (Please click the link below.)
- <http://international.jnu.ac.kr/user/indexSub.action?codyMenuSeq=17329&siteId=international&menuUIType=tab>

Nominated students scan and upload the following documents on their online application:

- SCANNED COPY OF OFFICIAL TRANSCRIPT  
Digital copy of OFFICIAL transcripts from your home institution
- A PHOTO A head shot on a white background. Both ears must be revealed.
- COLOR COPY OF PASSPORT (include identification and signature pages)



## Acceptance

CNU Office of International Affairs will email the home institution and mail official acceptance packets containing an Acceptance letter, Certificate of Admission, and the documents necessary to apply for a student visa (D-2).

- Accepted students are advised to wait to make travel plans and embassy/consulate visits until they have received their official acceptance packet.



## Visa requirements

The regulations for obtaining a visa are subject to change. Successful applicants will receive a "Certificate of Admission" from CNU. Students are required to apply for a Student Visa (D-2) at a Korean embassy/consulate located in their home countries. After arriving in Korea, all exchange students are required to visit the Gwangju Immigration Office to apply for an Alien Registration Card. The card will be used as an ID (residence permit) during their stay here in Korea. It takes 3 weeks on average to have it issued.



## Health insurance

All international students at CNU are required to be covered by health insurance during their entire course of study. CNU has partnered with a local insurance company to provide an insurance plan for our international students. All international students must either register or provide proof of insurance coverage that meets the following requirements:

- Medical benefits of at least \$100,000 per accident or illness
- Repatriation of remains in the amount of \$20,000

The insurance plan costs approximately \$150 per semester. If you are already covered by insurance in your home country, please submit a copy of the proof of health insurance document (in English) at least 4 weeks before the first day of school via email.

- Deadline: January 31st for Spring semester / July 31st for Fall semester





03

Academic  
Information

## Areas of Study

### Undergraduate Programs

#### Agriculture and Life Sciences

Plant Biotechnology  
Forest Resources  
Applied Bioscience and Biotechnology  
Animal Science  
Landscape Architecture  
Agricultural Economics  
Rural and Bio-systems Engineering  
Bioenergy Science and Technology

#### Arts

Fine Arts  
Music  
Korean Traditional Music

#### Business Administration

Business Administration  
Economics

#### Education

Education  
Early Childhood Education  
History Education  
Geography Education  
Ethics Education  
Korean Education  
English Education  
Mathematics Education  
Physics Education  
Chemistry Education  
Biology Education  
Earth Science Education  
Home Economics Education  
Music Education  
Physical Education

#### Engineering

Architecture  
Mechanical Systems Engineering  
Material Science and Engineering  
Electronics and Computer Engineering  
Applied Chemical Engineering  
Civil Engineering  
Energy and Resources Engineering  
Environmental Engineering  
Polymer and Fiber System Engineering

Industrial Engineering  
Electrical Engineering

#### Human Ecology

Family Environment and Welfare  
Division of Food and Nutrition  
Clothing and Textile

#### Humanities

Korean Language and Literature  
English language and Literature  
German language and Literature  
French language and Literature  
Chinese language and Literature  
Japanese language and Literature  
History  
Philosophy

#### Natural Sciences

Biological Sciences and Technology  
Mathematics  
Statistics  
Physics  
Chemistry  
Biology  
Earth System and Environmental Sciences

#### Nursing

Nursing

#### Pharmacy

Pharmacy

#### Social Sciences

Political Science and International Relations  
Sociology  
Psychology  
Library and Information Science  
Communication  
Geography  
Anthropology  
Public Administration

#### Veterinary Medicine

Pre-veterinary Medicine  
Veterinary Medicine

#### Medicine

Pre-medicine  
Medicine

#### Interdisciplinary Studies

Self-designed Interdisciplinary Studies



## Graduate Programs

### Art

Fine Arts  
Music  
Traditional Korean Music

### Engineering

Advanced Chemicals & Engineering  
Architectural Engineering  
Civil Engineering  
Electrical Engineering  
Electronics & Computer Engineering  
Energy & Resources Engineering  
Environmental Engineering  
Industrial Engineering  
Materials Science &Engineering  
Mechanical Engineering  
Polymer Engineering

### Humanities & Social Sciences

Accounting  
Agricultural Economics  
Anthropology  
Business Administration  
Chinese Lang & Literature  
Communication  
Economics  
Education  
English Lang & Literature  
English Lang Education  
French Lang & Literature  
Geography  
German Lang & Literature  
History  
International Trade  
Japanese Lang & Literature  
Korean Lang & Literature  
Korean Lang Education  
Law  
Library & Info Science  
Philosophy  
Political Science  
Psychology  
Public Administration

Regional Development  
Social Studies Education  
Sociology

### Interdisciplinary Programs

Archival Studies  
Bioenergy and Biomaterial  
Biomedical Engineering  
Brain Science  
Cultural Properties  
Electric Commerce  
Global Diaspora Studies  
Molecular Medical Science  
Nano-Science &Technology  
NGO Studies  
Teaching Korean as a Foreign Language

### Medical Science

Dental Science  
Medical Science  
Veterinary Medicine

### Natural Sciences

Agriculture Chemistry  
Animal Science & Bioindustry  
Animal Science &Biotech  
Applied Biology  
Applied Plant Science  
Bioenergy Science &Tech  
Biological Science &Biotech  
Biotechnology  
Chemistry  
Clothing and Textiles  
Earth Systems &Environmental Science  
Family Environment &Welfare  
Food and Nutrition  
Food Science &Technology  
Forest Products Tech  
Forestry  
Horticulture  
Landscape Architecture  
Mathematics/Statistics  
Oceanography  
Pharmacy  
Physics  
Rural& Bio-systems Engineering  
Wood Science &Landscape Architecture

## Academic Information

### Academic Calendar

	Spring semester	Fall Semester
Airport Pick-up	February 28	August 30
First day of semester	March 2	September 1
Course Add/Drop Period	March 2-6	September 1-5
Mid-term Examination	April 16-20	October 15-19
Last day of semester	June 17	December 17
Final Examination	June 17-22	December 17-21
Dormitory move-out	June 22	December 21

\*These dates are tentative and subject to change.

### Course Registration

CNU Office of International Affairs will send the list of courses offered in English and course registration form to the applicants directly via email on the following dates:

- Spring semester : Third week of January
- Fall semester : Third week of July

### Transcripts

CNU Office of International Affairs will order one official copy of the incoming exchange student's Chonnam National University transcript to be sent directly to the home institution, upon completion of the student's studies.

Additional transcripts can be ordered upon by request via email for a fee.

- Spring semester : Third week of January
- Fall semester : Third week of July

### CNU Student Cards

All new students will be issued a CNU student card. This card serves as a student ID, library card, and allows access to a variety of on-campus service. It is also can be used as a public transit card in Gwangju.

### Areas with Limited Accessibility

International exchange students may enroll for courses in almost any academic discipline at CNU. Please note, however, course placement in certain programs including; College of Medicine, College of Nursing, College of Pharmacy, College of Veterinary Medicine, and Department of English Education is not possible.

## Academic Notes

Students need to fill out the form and send it to the CNU coordinator before the due date via email. The CNU coordinator will register the courses on behalf of the students but their choices cannot be guaranteed. Every first week of the semester, there is a "course add and drop" period, so student can add, or drop courses after their arrival at CNU. Course registration will be finalized after this period.

Students' home institutions have set the policy regarding the awarded credits for coursework completed at CNU. Students are responsible for knowing their home institutions' policies and procedures regarding this matter.

Important Academic information: CNU subscribes to the system of Korean CREDIT. CNU requires exchange students to take at least 6 Korean credits (about 9 ECTS) per semester. A single course at CNU usually grants 3 credits. (Workloads /Course = 3 hours a week, total of 45 hours per semester)

- Minimum credits to maintain CNU student status: 3 credits per semester
- Maximum credits for exchange students are allowed to take: 18 credits per semester

🔗 Language of instruction: Korean/English

🔗 Grading system

Grade	Score	GPA	
A+	95 ~ 100	4.5	excellent
A	90 ~ 94	4	very good
B+	85 ~ 89	3.5	good
B	80 ~ 84	3	highly satisfactory
C+	75 ~ 79	2.5	satisfactory
C	70 ~ 74	2	fare / sufficient(minimum passing grade)
D+	65 ~ 69	1.5	
D	60 ~ 64	1	insufficient
F	0 ~ 59	0	



## Scholarship 'Global Korea Scholarship'

Global Korean Scholarship (GKS) is available for incoming exchange students.

- 🔗 Eligibility : CNU exchange student with at least CGPA 85 out of 100
- 🔗 Number of Students : 4-5 Students every semester
- 🔗 Benefits
  - Round-trip Flight Ticket
  - Settlement Support allowance: 200,000KRW
  - Monthly allowance: 500,000KRW per month
  - Health Insurance
- 🔗 Criteria
  - CGPA
  - [Extra credits] Korean language proficiency (TOPIK)
  - [Extra credits] Official foreign language proficiency score  
e.g. DELE, DELF, ZD, TOEFL, TOEIC, IELTS, etc. (University test is not applicable)

- 🔗 Application Procedure
  1. CNU Office of International Affairs will select up to 10 students among the incoming exchange program applicants by their CGPA descending order
  2. CNU Office of International Affairs will select 5-6 students based on the CGPA, TOPIK score, official foreign language score, and study plan among the 10 students.
  3. CNU will send the list of selected students to the Ministry of Education and the accepted students will be informed via email.

## CNU Merit Scholarship

Merit scholarship is available to the incoming exchange students.

- 🔗 Eligibility : CNU exchange student with at least CGPA 90 out of 100
- 🔗 Number of Students : 5 Students every semester
- 🔗 Benefits : Dormitory and Meal plan fee waiver
  - CGPA 40%
  - Foreign Language Proficiency Score (TOPIK, TOEFL, TOEIC, DELE, DELF, etc.) 30%
  - Self-Introduction 15%
  - Study plan 15%
- 🔗 [Extra points] students who joined an incoming program(exchange student, short-term, internship, etc.) at CNU before will get extra 10 points.
- 🔗 Application Procedure
  1. CNU Office of International Affairs will select 5 students among the incoming exchange program applicants by above 4 criteria.
  2. The accepted students will be informed via email.



## CAMPUS-Asia AIMS

CAMPUS-Asia AIMS(ASEAN International Mobility for Students) Scholarship is available to the incoming exchange students from AIMS Partnership Universities.

✎ Eligibility: CNU exchange student from AIMS Partner Universities

Grade	Country	Name of University
1	Malaysia	University of Malaya(UM)
2	Malaysia	National University of Malaysia(UKM)
3	Malaysia	University Sains Malaysia(USM)
4	Malaysia	University Technology Malaysia(UTM)
5	Indonesia	Insitute of Technology Bandung(ITB)
6	Indonesia	Universitas Indonesia International office (UI)
7	Thailand	King Mongkut's University of Technology Thonburi(KMUTT)
8	Brunei	Universiti Teknologi Brunei(UTB)
9	Philippines	Saint Louis University(SLU)
10	Vietnam	Thuy Loi University(TLU)
11	Vietnam	Thai Nguyen University of Agriculture and Forestry(TNUAF)
12	Vietnam	University of Transport and Communications(UTC)

✎ Number of Students : Approximately 30 students every semester

✎ Programs

1. **One-on-one Mentor Project** : Once a week(only for students majoring in Engineering)
2. **Industry Site-visits** : Every other Friday (2~3 sites / 12~15 hours)  
[e.g. KIA Motors, POSCO, KDJ Center, etc.]
3. **Korean Culture Experiences** : Every other Friday (3~4 sites / 15~20 hours)  
[e.g. Jeonju Hanok Village, Suncheon Bay Garden, Yeosu Water Sports, etc.]
4. **Korean Language Study** : “Coffee Hour” program with AIMS inbound and outbound students sharing language & culture (once a week)

✎ Benefits

1. Dormitory & Meal plan fee is waived
2. Industry visits and Korean culture trips are free
3. Book fee reimbursement: when AIMS students buy their textbooks for their major or Korean language course, they can be reimbursed the fees which will be sent directly to their bank accounts.
4. Priority will be given for selection in joining cultural events hosted by CNU OIA

## Programs for Incoming Exchange Students on Campus

### Free Korean Language Courses

Evening Korean language courses are offered by the CNU Language Education Center during the academic year free of charge.

- ✎ Length of program: 10 weeks
- ✎ Class: Every Tuesdays and Thursdays 7PM-9PM (subject to change)
- ✎ Level of instruction offered: all levels

### Buddy Program

Adjusting to a new cultural environment can be exciting but challenging at the same time. New international students at Chonnam National University often have a lot of questions and concerns during their first weeks on campus. The International Buddy Program was created to ease this transition by pairing Up new incoming exchange students with current CNU students.



### Cultural Excursions

Every semester, a one-day tour will be arranged by the Office of International Affairs for incoming exchange students. This tour will allow exchange students to indulge in Korean cuisine, interact with the locals, and experience different aspects of Korean culture

- ✎ Destinations: Suburban areas of Gwangju  
(e.g. Suncheon, Jeonju, Wando)



Internship

Incoming exchange students with TOPIK level 3 above or TOEFL ibt 100 / IELTS 7.0 (or English native speaker) have a credit-earning internship opportunity while studying at CNU. Students can earn 12 credits from 15 week internship program.

- Spring semester : Third week of January
- Fall semester : Third week of July

- After receiving the official CNU exchange acceptance letter, send an email to Ms. Shinye Kang at shannon@jnu.ac.kr with your name, nationality, home institution, and preferred employer
- Fill out the application form
- Skype interview with potential employer
- Final selection will be made by CNU and the employer by June 30<sup>th</sup> for the Fall semester and December 30<sup>th</sup> for the Spring semester.

Accepted students are required to arrive in Korea a month prior to the first day of school for participating in an internship orientation and a mandatory Korean language & culture course. This one-month orientation is a non-credit program.

Internship Places



Gwangju International Center  
<http://eng.gic.or.kr>



Gwangju Design Center  
<http://www.gdc.or.kr/eng>



Gwangju Convention and Visitors Bureau  
<http://www.gwangjuvcvb.or.kr>



Gwangju Techno Park  
<http://www.gjtp.or.kr/eng>



Chonnam National University  
Office of International Affairs  
<http://international.jnu.ac.kr>



Chonnam National University  
Language Education Center  
<https://lec.jnu.ac.kr/Eng>

CNU International Summer Session

Renowned scholars from Chonnam National University and other prestigious universities around the world will guide you through an exciting intellectual adventure. Student participants can take up to 6 credits during the 4 week period and experience Korean culture during the CNU International Summer Session.

Program Period: June 29 – July 24, 2020

Program Schedule

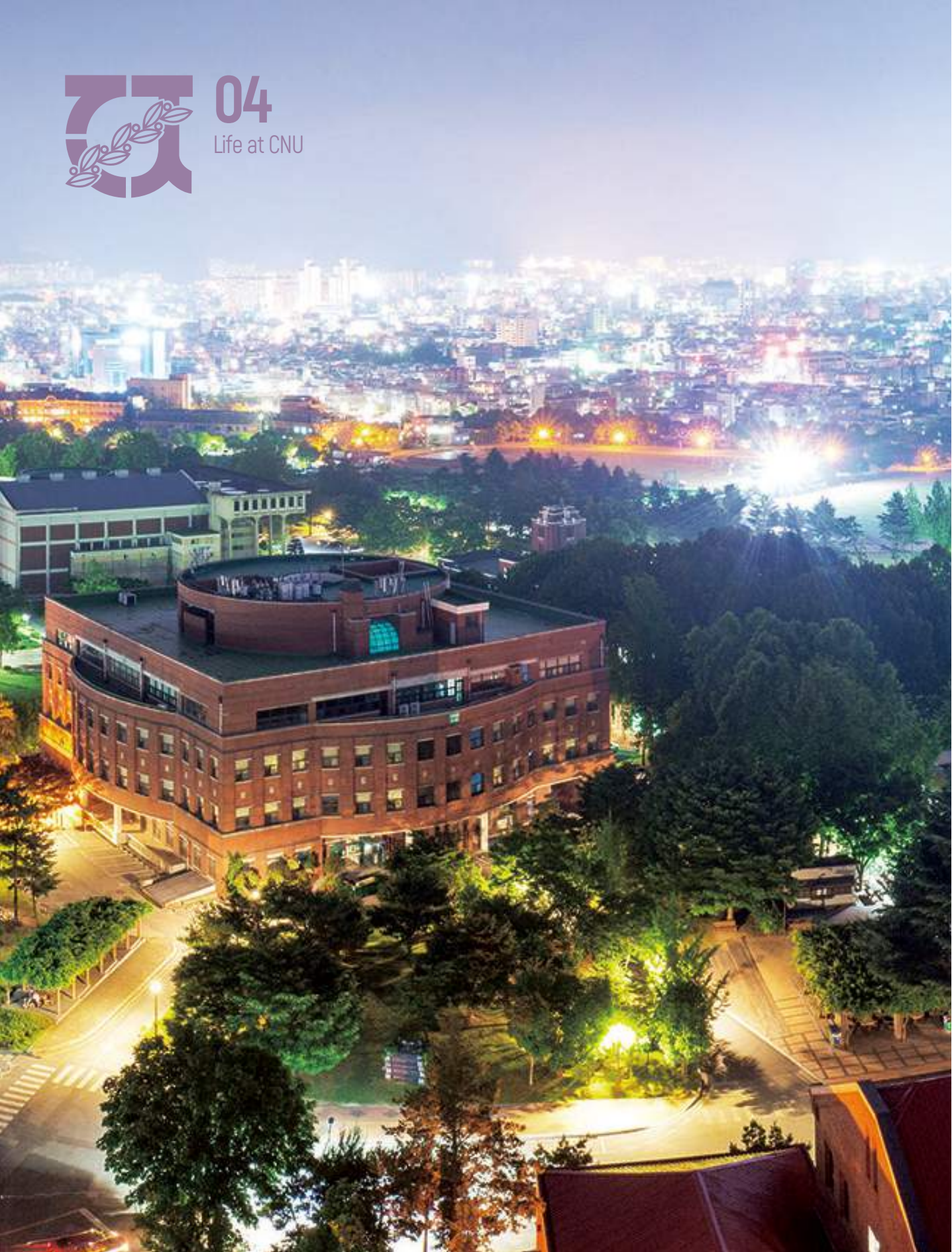
\* June 28, 2020 (Sunday): Pick-up at Incheon Airport between 9AM and 5PM and Dorm Check-in.

JUNE JULY	MON	TUE	WED	THUR	FRI	SAT
1st week	JUNE 29 CNUISS 2020 Orientation	JUNE 30 First day of Class	JULY 1 Yeongam F1 Circuit / Boseong Green Tea Plantation	JULY 2 Class	JULY 3 Class	JULY 4 Home-visit / Free Time
2nd week	JULY 6 Class	JULY 7 Class	JULY 8 Korean Traditional Costume Try-out / Korean cooking class	JULY 9 Class	JULY 10 Class	JULY 11-12 Seoul Trip
3rd week	JULY 13 Class	JULY 14 Class	JULY 15 Suncheon Bay Garden / Songwang Temple	JULY 16 Class	JULY 17 Class	JULY 18 518 Memorial Park
4th week	JULY 20 Class	JULY 21 Class	JULY 22 Reading Day for Final Exam	JULY 23 Class	JULY 24 Final Exam Farewell Party	JULY 25 Dorm Check-out

\*The schedule above is subject to change.







# Life at CNU

## Housing/Meal plan

Dormitory Building 9 (aka BTL Dorm)

Term	Short-Term	<b>Period</b> : One semester, 4 months <b>Cost</b> : 600,000KRW		
	Long-term	<b>Period</b> : One Semester + Summer/Winter break, 6 months <b>Cost</b> : 850,000KRW		
Room type	6 people Suite	- Twin Beds in a single room / Shared-bathroom * IP will be given to each room. Students need to purchase a LAN cable to get access to the Internet. - Air conditioner, Refrigerator, Desk, and Chair - 6-people-suite is an apartment style dorm with 3 rooms, and two people share one room.		
	2 people suite			
Meal plan		Option		Cost
	7 Days a week	1	3meals/day	750,000won
		2	2meals/day	600,000won
		3	1meal/day	350,000won
	5 Days a week	4	3meals/day	600,000won
5		2meals/day	450,000won	
6		1meal/day	250,000won	
	No Meal Plan			
Amenities	Laundry facilities, Vending machines, Study Room, Student Lounge(Microwave), Fitness center, Cafeteria, Convenience stores, Restaurants, Stationery Shop, etc.			





Costs

Estimated personal expenses per month in US dollars

Food	2-10 USD at local restaurants around campus
Alien Registration Card	Issuance of Alien card: 30 USD
Health insurance	150 USD per semester
Local Transportation	· Bus fare : 1 USD · Taxi fare : 3 – 15 USD in Gwangju e.g. Gwangju Bus Terminal to CNU: 5 USD Gwangju Airport/Train station to CNU: 13 USD
Academic (books, etc.)	200-300 USD per semester
Personal (entertainment, etc.)	150 - 300 USD
USD/KRW exchange rate	Varies from 1,050 - 1,150 KRW for 1USD.

\*See current exchange rate here: <http://fx-rate.net/KRW/>

Pick-up Services

After arriving at Exit D of the Incheon International Airport Terminal 1, CNU pick-up team will guide new incoming exchange students to limousine buses heading for Gwangju. When students arrive at CNU, CNU buddies will help international students check in to the CNU dormitories.



- ✎ Airport : Incheon-Seoul International Airport (ICN), Terminal 1
- ✎ Pick-up date: Designated date (Students will be informed via email.)
- ✎ Cost : 50,000 KRW or 50 USD including direct transportation to CNU
- ✎ Payment : Pay in Cash upon arrival at the airport
- ✎ Duration : 4 hours (ICN – CNU)

More Info

For further information concerning Gwangju and South Korea, please look at some of the following links below:

- |                                       |                                                                                                                                                                   |
|---------------------------------------|-------------------------------------------------------------------------------------------------------------------------------------------------------------------|
| ✎ South Korea Tourism                 | <a href="http://www.visitkorea.or.kr/intro.html">http://www.visitkorea.or.kr/intro.html</a>                                                                       |
| ✎ Talk to me in Korean                | <a href="http://www.talktomeinkorean.com/">http://www.talktomeinkorean.com/</a>                                                                                   |
| ✎ Gwangju website                     | <a href="http://eng.gwangju.go.kr/index.do?S=S02">http://eng.gwangju.go.kr/index.do?S=S02</a>                                                                     |
| ✎ Gwangju International Center (GIC)  | <a href="http://eng.gic.or.kr/">http://eng.gic.or.kr/</a>                                                                                                         |
| ✎ Trains (Express Rail)               | <a href="http://www.korail.com/">http://www.korail.com/</a>                                                                                                       |
| ✎ Buses                               | <a href="http://www.kobus.co.kr/web/eng/index.jsp">http://www.kobus.co.kr/web/eng/index.jsp</a> I <a href="http://www.hticket.co.kr">http://www.hticket.co.kr</a> |
| ✎ South Korea Weather Forecast        | <a href="http://web.kma.go.kr/eng/index.jsp">http://web.kma.go.kr/eng/index.jsp</a>                                                                               |
| ✎ South Korea at Wikipedia            | <a href="http://en.wikipedia.org/wiki/South_Korea">http://en.wikipedia.org/wiki/South_Korea</a>                                                                   |
| ✎ Gwangju at Wikipedia                | <a href="http://en.wikipedia.org/wiki/Gwangju">http://en.wikipedia.org/wiki/Gwangju</a>                                                                           |
| ✎ Embassies/Consulates of South Korea | <a href="http://embassy.goabroad.com/embassies-of/south-korea">http://embassy.goabroad.com/embassies-of/south-korea</a>                                           |





2020 Spring Semester

College	Department	Course Title	Course No.	Credits
Agriculture and Life Science	Animal Science	Growth and Developmental Biology	ANS4004-1	3
Agriculture and Life Science	Applied Biology major	Functional Insect Genomics	AGB4012-1	3
Agriculture and Life Science	Bioenergy Science & Technology	Bioenergy Engineering Capstone Design 2	BIE3005-1	3
Agriculture and Life Science	Biosystems Engineering	Biosystems Modeling and Practice	AGE4051-1	3
Agriculture and Life Science	Molecular Biotechnology	Animal Genetic Engineering	GEN3003-1	3
Agriculture and Life Science	Molecular Biotechnology	Molecular Microbiology	BST3003-1	3
Agriculture and Life Science	Molecular Biotechnology	Cell Biology 1	BST2001-2	3
Agriculture and Life Science	Molecular Biotechnology	Organic Chemistry 1	FST2010-4	3
Business	Business Administration	Business Statistics	BUS2001-1	3
Business	Business Administration	Principles of Management	BUS1001-5	3
Business	Business Administration	Organizational Behavior	BUS2012-6	3
Business	Business Administration	Intermediate Accounting 1	BUS2004-8	3
Business	Business Administration	Principles of Accounting	BUS1002-6	3
Business	Business Administration	Principles of Accounting	BUS1002-7	3
Business	Business Administration	Principles of Accounting	BUS1002-10	3
Business	Business Administration	Management Information System	BUS2020-4	3
Business	Business Administration	Business Ethics	BUS4028-2	3
Business	Business Administration	Labor Relations	BUS4003-1	3
Business	Business Administration	Management of Multinational Enterprise	BUS3005-2	3
Business	Business Administration	Introduction to International Trade	BUS1003-1	3
Business	Business Administration	Production & Operations Management	BUS3009-5	3
Business	Business Administration	Service Marketing	BUS4026-4	3
Business	Business Administration	Investment Theory	BUS3002-1	3
Business	Business Administration	Quality Management and Environmental Management	BUS4032-2	3
Business	Economics	Introduction to Economics	CLT0763-9	3
Business	Economics	Principles of Economics 1	ECN1007-3	3
Business	Economics	Principles of Economics 1	ECN1007-4	3
Business	Economics	Macroeconomic Theory	ECN2001-2	3
Business	Economics	Economic Statistics	ECN1001-1	3
Business	Economics	Microeconomic Theory	ECN1003-3	3
Business	Regional Development Major	Principles of Real Estate Development	RDV2013-1	3
Business	Regional Development Major	Overseas Regional Development	RDV3006-1	3
Convergence	Robotics Engineering Convergence	Robot Engineering	MAE4019-1	3
Education	Education	Educational Administration	EDU2012-1	3
Education	Elementary Special Education	English Education in Elementary Special Education	SPE9033-1	3
Education	English Education	Visual Text and English Education	EEL2004-1	3
Education	English Education	Teaching Grammar in EFL	EEL2006-1	3
Education	English Education	English Teaching Practice	EEL4002-1	3
Education	English Education	English Language Acquisition	ELL3036-1	3

College	Department	Course Title	Course No.	Credits
Education	English Education	English Phonetics & Phonology	ELL2034-1	3
Education	English Education	English Evaluation	EEL4005-1	3
Education	History Education	Readings of Primary Sources in European History	EH12009-1	3
Education	Home Economics Education	Adolescence Development	HMM3035-1	3
Engineering	Environment and Energy Engineering	Waste Resource Treatment and Energy Engineering	ENV3029-1	3
Engineering	Environment and Energy Engineering	Environmental Energy Engineering and Practice	ENV4034-1	3
Engineering	Environment and Energy Engineering	Environmental Electrochemistry	ENV4030-1	3
Engineering	Industrial Engineering	Design Engineering	IDE3030-1	3
Engineering	Industrial Engineering	Matrix and Linear Algebra	IDE2015-1	3
Engineering	Industrial Engineering	Introduction to Probability and Statistics	IDE1009-1	3
Engineering	Industrial Engineering	Introduction to Probability and Statistics	IDE1009-2	3
Engineering	Materials Science & Engineering	Solid State Chemistry	MSE3060-1	3
Engineering	Materials Science & Engineering	Introduction to Engineering Design	ENV1005-4	3
Engineering	Materials Science & Engineering	Engineering Mathematics	ENG2005-1	3
Engineering	Materials Science & Engineering	Engineering Mathematics	ENG2005-2	3
Engineering	Materials Science & Engineering	Phase Equilibria	CRM3001-1	3
Engineering	Materials Science & Engineering	Materials in Energy Applications	MSE4015-1	3
Engineering	Materials Science & Engineering	Welding and Fine Joining	MSE3007-1	3
Engineering	Materials Science & Engineering	Electronic Display Engineering	MSE3035-1	3
Engineering	Mechanical Engineering	Solid mechanics	MAE9017-1	3
Engineering	Mechanical Engineering	Engineering Mathematics 1	ENG1003-5	3
Engineering	Mechanical Engineering	Design Of Machine Elements 1	MAE3006-2	3
Engineering	Mechanical Engineering	Mechanical Materials	MAE2009-2	3
Engineering	Mechanical Engineering	Kinematics of Mechanisms	MAE2007-1	3
Engineering	Mechanical Engineering	?SystemEngineering	MAE4001-1	3
Engineering	Mechanical Engineering	Thermodynamics	ACH3006-5	3
Engineering	Mechanical Engineering	Design of Thermo-Fluid System	MAE4086-1	3
Engineering	Mechanical Engineering	Heat Transfer	MAE3033-2	3
Engineering	Mechanical Engineering	Mechanical Vibrations	MSE9025-1	3
Engineering	Mechanical Engineering	Mechanical Vibrations	MSE9025-2	3
Engineering	Mechanical Engineering	Environment-Friendly Vehicles	MAE4073-1	3
Engineering	Polymer Engineering	Organic Chemistry 1	FST2010-5	3
Engineering	Software Eengineering	Linux System	CIS2010-2	3
Human Ecology	Nutrition major	Molecular Nutrition	FDN4015-2	3
Humanities	English Language and Literature	18th and 19th Century British Novel	ELL9029-1	3
Humanities	English Language and Literature	18th and 19th Century British Novel	ELL9029-2	3
Humanities	English Language and Literature	Pre-20th Century British Poetry	ELL9028-1	3
Humanities	English Language and Literature	American Society and Popular Culture	CLT0613-1	3
Humanities	English Language and Literature	Shakespeare	ELL4001-1	3
Humanities	English Language and Literature	Current Issues and Debate	ELL2036-1	3
Humanities	English Language and Literature	Survey of British Literature 1	ELL2003-2	3
Humanities	English Language and Literature	Introduction to English Literature	ELL2001-2	3
Humanities	English Language and Literature	English Literary Criticism	ELL3004-1	3
Humanities	English Language and Literature	Special Topics in English Literature	ELL9031-1	3
Humanities	English Language and Literature	English Teaching Methods	ELL3043-1	3



College	Department	Course Title	Course No.	Credits
Humanities	English Language and Literature	English Grammar1	ELL2031-1	3
Humanities	English Language and Literature	English Syntax	ELL3024-1	3
Humanities	English Language and Literature	English Syntax	ELL3024-2	3
Humanities	English Language and Literature	Introduction to English Linguistics1	ELL2030-2	3
Humanities	English Language and Literature	Modern Cultures of English-Speaking World	ELL9025-1	3
Humanities	History	Western history and culture	CLT0836-7	3
Humanities	Philosophy	European Intellectual History 1[Early Modern Art]	PHL4019-1	3
Humanities	Philosophy	European Intellectual History 3[Twentieth Century Art]	PHL4021-1	3
Institute of Liberal Education	Institute of Liberal Education	Reading & Discussion in English	CLT0847-1	3
Institute of Liberal Education	Institute of Liberal Education	Introduction to Korean Folklore	CLT0740-1	3
Institute of Liberal Education	Institute of Liberal Education	Introduction to Korean History	CLT0738-1	3
Institute of Liberal Education	Institute of Liberal Education	Korean Language and Linguistic Typology	CLT0731-1	3
Institute of Liberal Education	Institute of Liberal Education	Introduction to Korean Traditional Art	CLT0735-1	3
Institute of Liberal Education	Institute of Liberal Education	Introduction to Korean Traditional Music	CLT0734-1	3
Language Education Center	Language Education Center	Korean Listening and Speaking 1_Beginner	CLT0710-1	3
Language Education Center	Language Education Center	Korean Listening and Speaking 1_Beginner	CLT0710-2	3
Language Education Center	Language Education Center	Korean Listening and Speaking 1_Beginner	CLT0710-3	3
Language Education Center	Language Education Center	Korean Listening and Speaking 2_Intermediate	CLT0711-1	3
Language Education Center	Language Education Center	Korean Listening and Speaking 2_Intermediate	CLT0711-2	3
Language Education Center	Language Education Center	Korean Listening and Speaking 2_Intermediate	CLT0711-3	3
Language Education Center	Language Education Center	Korean Listening and Speaking 3_Advanced	CLT0788-1	3
Language Education Center	Language Education Center	Korean Listening and Speaking 3_Advanced	CLT0788-2	3
Language Education Center	Language Education Center	Korean Reading and Writing 1_Beginner	CLT0712-1	3
Language Education Center	Language Education Center	Korean Reading and Writing 1_Beginner	CLT0712-2	3
Language Education Center	Language Education Center	Korean Reading and Writing 1_Beginner	CLT0712-3	3
Language Education Center	Language Education Center	Korean Reading and Writing 2_Intermediate	CLT0713-1	3
Language Education Center	Language Education Center	Korean Reading and Writing 2_Intermediate	CLT0713-2	3
Language Education Center	Language Education Center	Korean Reading and Writing 2_Intermediate	CLT0713-3	3
Language Education Center	Language Education Center	Korean Reading-Writing 3_Advanced	CLT0789-1	3
Medicine	Basic Medical Science	Basics for medical research	MED4077-1	3
Natural Sceicne	Biological Sciences	Introduction to Biomedical Science	BST4027-1	3
Pharmacy	Pharmacy	Pharmacognosy 1	PHM1020-1	2
Pharmacy	Pharmacy	Pharmaceutical Process Validation	PHM4106-1	2
Pharmacy	Pharmacy	Medicinal Chemistry 1	PHM3021-1	2
Pharmacy	Pharmacy	Pharmaceutical Design	PHM2027-1	2
Social Science	Communication	Mass communication English	COM3017-1	3
Social Science	Geography	Geography Of America	GGR4015-1	3
Social Science	Political Science & International Relations	History of international relations	POS2017-1	3
Social Science	Political Science & International Relations	Practice in International Relations[Capstone Design]	POS4021-1	3
Social Science	Political Science & International Relations	Media and Politics	POS2011-1	3
Social Science	Psychology	Introduction to Psychology	CLT0046-1	3
Social Science	Public Administration	Comparative Administration	PBA4001-1	3
Social Science	Sociology	Reading of Sociological Writings	SOC2016-1	3
Veterinary Medicine	Veterinary Medicine	Medical English and Practice	VET4099-1	3
Veterinary Medicine	Veterinary Medicine	Veterinary Dermatology	VET3008-1	2

College	Department	Course Title	Course No.	Credits
Graduate	Advanced Chemicals & Engineering	Hydrogen Energy	GR20311-1	3
Graduate	Agriculture Chemistry	Advanced Course of Instrumental Analysis	GR01799-1	3
Graduate	Agriculture Chemistry	Seminar in Agricultural Chemistry 1	GR20451-1	3
Graduate	Agriculture Chemistry	Molecular Cell Biology	GR03524-2	3
Graduate	Agriculture Chemistry	Advanced Fertilizers	GR03698-1	3
Graduate	Agriculture Chemistry	Advanced Environmentally-Friendly Agriculture	GR21214-1	3
Graduate	Agriculture Chemistry	Applied Environment Agriculture Science	GR30121-1	3
Graduate	Agriculture Chemistry	Environmental toxicology	GR09544-1	3
Graduate	Applied Biology	Functional Genomics in Insect	GR24030-1	3
Graduate	Applied Biology	Integrated Plant and Grain Pest Insect Management	GR24031-1	3
Graduate	Applied Biology	Plant Molecular Biology	GR15160-1	3
Graduate	Applied Biology	Research Guidance 2	GR22000-15	3
Graduate	Architechure and Civil Engineering	Advanced Probability-Based Design	GR23829-1	3
Graduate	Biomedical Sciences	Molecular Biology	GR22011-1	3
Graduate	Biomedical Sciences	Genetics	GR22019-1	3
Graduate	Biomedical Sciences	Trends in medical sciences[ I ]	GR22014-1	3
Graduate	Biomedical Sciences	Seminars in medical advances[ I ]	GR22007-1	3
Graduate	Dental Science	Theory of Craniofacial Pain	GR15418-1	3
Graduate	Electronic Computer Engineering	Microcontroller Architecture and Low Power Design	GR17427-1	3
Graduate	Electronic Computer Engineering	Distributed Application System	GR18007-1	3
Graduate	Electronic Computer Engineering	Real Time Internet Protocol	GR17433-1	3
Graduate	Electronic Computer Engineering	Image Information Processing	GR18000-1	3
Graduate	Electronic Computer Engineering	Next Generation Intelligent Mobile Communication Engineering	GR21381-1	3
Graduate	Electronic Computer Engineering	Feature Extraction	GR23501-1	3
Graduate	Electronic Computer Engineering	Principles of Programming Language	GR23499-1	3
Graduate	Energy and Resources Engineering	Enhanced Oil Recovery	GR30672-1	3
Graduate	Energy and Resources Engineering	Advanced Geology	GR07836-1	3
Graduate	English Education	English Phonology	GR19086-1	3
Graduate	Environment and Energy Engineering	Patent Mapping	GR30761-1	3
Graduate	History	Studies in American History	GR03002-1	3
Graduate	History	Contemporary Korean History	GR17984-1	3
Graduate	Integrative Food, Bioscience and Biotechnology	Advanced Animal Genetic Engineering II	GR16734-1	3
Graduate	Integrative Food, Bioscience and Biotechnology	Advanced plant Developmental Genetics	GR23569-1	3
Graduate	Integrative Food, Bioscience and Biotechnology	Enzymology	GR09646-1	3
Graduate	Interdisciplinary Program of NGO	Seminar on New Social Movement	GR22090-1	3
Graduate	Interdisciplinary Program of NGO	Democracy and Human Rights	GR22095-1	3
Graduate	Interdisciplinary Program of NGO	NGO Administration and Management	GR23049-1	3
Graduate	Law School	International Human Rights Law	GR18136-1	3
Graduate	Law School	International Human Rights Law	SJD1436-1	3
Graduate	Law School	International Human Rights	CLS2017-1	2
Graduate	Law School	Legal English	CLS1001-1	2
Graduate	Law School	The Law of Business Enterprises	CLS5014-1	2
Graduate	Materials Science and Engineering	Advanced Metallography	GR18051-1	3
Graduate	Materials Science and Engineering	Advanced Energy Materials Engineering	GR19499-1	3
Graduate	Materials Science and Engineering	Advanced Materials Science	GR06943-1	3



College	Department	Course Title	Course No.	Credits
Graduate	Materials Science and Engineering	Electrochemical Energy Conversion and Storage	GR30540-1	3
Graduate	Materials Science and Engineering	Electronic Materials	GR14745-1	3
Graduate	Mechanical Engineering	Advanced Solid Mechanics	GR01113-1	3
Graduate	Mechanical Engineering	Microfluidics	GR23985-1	3
Graduate	Mechanical Engineering	Service Robotics	GR20116-1	3
Graduate	Mechanical Engineering	Advanced Design Engineering	GR04286-1	3
Graduate	Molecular Medicine	Advanced Microbiology	GR03064-1	3
Graduate	Molecular Medicine	Molecular Biology	GR03521-1	3
Graduate	Molecular Medicine	Molecular Imaging	GR31076-1	3
Graduate	Molecular Medicine	Molecular medicine seminar	GR23548-1	3
Graduate	Molecular Medicine	Advanced Enzymology	GR15376-1	3
Graduate	Music	Music Analysis	GR23289-2	3
Graduate	Oceanography	Advanced Marine Meteorology	GR23749-1	3
Graduate	Pharmacy	Protein Biochemistry	GR19834-1	3
Graduate	Pharmacy	Advanced Drug Delivery System for Bionanopharmaceuticals	GR30525-1	3
Graduate	Pharmacy	Molecular Toxicology	GR21222-1	3
Graduate	Pharmacy	Advanced Pharmacognosy 1	GR23277-1	3
Graduate	Pharmacy	Receptor Pharmacology	GR14545-1	3
Graduate	Pharmacy	Signal Transductions	GR17001-1	3
Graduate	Pharmacy	Advanced Pharmaceutical Chemistry II	GR05553-1	3
Graduate	Pharmacy	Advanced Medicinal Chemistry II	GR06444-1	3
Graduate	Pharmacy	Research Techniques in Natural Products Chemistry	GR15619-1	3
Graduate	Philosophy	Culture Art and Philosophy	GR30987-1	3
Graduate	Wood Science and Engineering	Design of Wood Structure	GR02822-1	3
Graduate	Wood Science and Engineering	Maintenance of Woody Cultural Properties	GR17805-1	3
Graduate	Wood Science And Landscape Architecture	Traditional timber structure maintenance	GR23396-1	3

2019 Fall Semester

College	Department	Course Title	Course Code	Credits
Agriculture and Life Science	Applied Biology	Insect Physiology	AGB3003	3
Agriculture and Life Science	Bioenergy Science & Technology	Bioenergy Engineering Capstone Design 1	BIE3004	3
Agriculture and Life Science	Bioenergy Science & Technology	Enzymology	BIO4013	3
Agriculture and Life Science	Biosystems Engineering	Biosystems Automation	AGE4050	3
Agriculture and Life Science	Molecular Biotechnology	Analytical Chemistry Lab.	CHM2030	2
Agriculture and Life Science	Molecular Biotechnology	Animal Genetic Engineering and practice	GEN4022	3
Agriculture and Life Science	Rural & Systems Engineering	Irrigation & Drainage Engineering	AGE3033	3
Business	Business Administration	Global Business Management	BUS2035	3
Business	Business Administration	Human Resources Management	BUS3011	3
Business	Business Administration	Human Resources Management	BUS3011	3
Business	Business Administration	Introduction to e-Business	BUS3035	3
Business	Business Administration	Introduction to e-Business	BUS3035	3
Business	Business Administration	Introduction to International Trade	BUS1003	3
Business	Business Administration	Knowledge Management and Intellectual Property Right Management	BUS4033	3
Business	Business Administration	Management of Technology and Innovation	BUS4035	3
Business	Business Administration	Managerial Decision Making	BUS2030	3
Business	Business Administration	Marketing Management	BUS2018	3
Business	Business Administration	Marketing Management	BUS2018	3
Business	Business Administration	Mathematics for Management	BUS2013	3
Business	Business Administration	Organization Theory	BUS2014	3
Business	Business Administration	Principles of Accounting	BUS1002	3
Business	Business Administration	Principles of Accounting	BUS1002	3
Business	Business Administration	Supply Chain Management	BUS4027	3
Business	Business Administration	Intermediate Accounting 2	BUS2023	3
Business	Economics	Introduction to Economics	CLT0763	3
Business	Economics	Macroeconomic Theory	ECN2001	3
Business	Economics	Mathematical Analysis for Economics	ECN1004	3
Business	Economics	Microeconomic Theory	ECN1003	3
Business	Economics	Principles of Economics 2	ECN1008	3
Business	Economics	Public Economics	ECN3007	3
Business	Regional Development	Introduction to Urban Development	RDV2012	3
Business	Regional Development	Urban Management	RDV3009	3
Education	Biology Education	Animal Physiology	BIO3049	3
Education	Education	Educational Policy	EDU4037	3
Engineering	Architectural Engineering	Mechanics of Materials	ENG2003	3
Engineering	Electronics & Computer Engineering	Engineering Mathematics 1	ENG1003	3
Engineering	Energy and Resources Engineering	GPR and Electromagnetic Prospecting	GSE4019	3
Engineering	Environment and Energy Engineering	Energy System Design	ENV4043	3
Engineering	Environment and Energy Engineering	Green Energy	ENV1004	3



College	Department	Course Title	Course Code	Credits
Engineering	Environment and Energy Engineering	Hazardous Wastes Management and Soil Remediation Engineering	ENV3025	3
Engineering	Fiber Science and Engineering	Electronic Materials	CHE4113	3
Engineering	Industrial Engineering	System Analysis & Design	IDE2019	3
Engineering	Materials Science & Engineering	Electrical and Magnetic Properties of Materials	MSE2027	3
Engineering	Materials Science & Engineering	Introduction to Materials Science and Engineering 1	MSE1003	3
Engineering	Materials Science & Engineering	Mechanical Properties of Materials	MSE2028	3
Engineering	Materials Science & Engineering	Mechanics of Materials	ENG2003	3
Engineering	Materials Science & Engineering	Nano Composite Materials	MSE9092	3
Engineering	Materials Science & Engineering	Theory and Phenomena of Sintering	MSE4041	3
Engineering	Mechanical Engineering	Applied Heat Transfer	MAE3035	3
Engineering	Mechanical Engineering	Applied Solid Mechanics	MAE2016	3
Engineering	Mechanical Engineering	Applied Solid Mechanics	MAE2016	3
Engineering	Mechanical Engineering	Applied Thermodynamics	MAE2015	3
Engineering	Mechanical Engineering	Applied Thermodynamics	MAE2015	3
Engineering	Mechanical Engineering	Applied Thermodynamics	MAE2015	3
Engineering	Mechanical Engineering	Dynamics	MAE2012	3
Engineering	Mechanical Engineering	Dynamics	MAE2012	3
Engineering	Mechanical Engineering	Gas Dynamics	MAE3014	3
Engineering	Mechanical Engineering	Statics	MAE9015	3
Engineering	Polymer Engineering	Organic Chemistry 2	CLT0505	3
Engineering	Polymer Engineering	Polymeric nano-composites	ACH4052	3
Engineering	Software Engeering	Object-oriented design project	CIS2013	3
Humanities	English Language and Literature	American Poetry	ELL4011	3
Humanities	English Language and Literature	American Society and Popular Culture	CLT0613	3
Humanities	English Language and Literature	Business English	ELL3044	3
Humanities	English Language and Literature	Business English	ELL3044	3
Humanities	English Language and Literature	English Comprehension 1	ELL9027	3
Humanities	English Language and Literature	English Grammar2	ELL2032	3
Humanities	English Language and Literature	English Literature in Film and Video	ELL4006	3
Humanities	English Language and Literature	English-Speaking World Literature	ELL4017	3
Humanities	English Language and Literature	Literacy in the Humanities	ELL9042	3
Humanities	English Language and Literature	Media English And Composition	ELL2035	3
Humanities	English Language and Literature	Media English And Composition	ELL2035	3
Humanities	English Language and Literature	Modern British Novel	ELL9041	3
Humanities	English Language and Literature	Modern British Novel	ELL9041	3
Humanities	English Language and Literature	Modern British Poetry	ELL9032	3
Humanities	History	Western history and culture	CLT0836	3
Humanities	Korean Language & Literature	Korean Language Skills for Getting Hired	CLT0874	3
Humanities	Philosophy	European Intellectual History 2 (Nineteenth Century Art)	PHL4020	3
Humanities	Philosophy	Philosophy of Art	PHL4010	3
Institute of Liberal Education	Institute of Liberal Education	Introduction to Korean Folklore	CLT0740	3
Institute of Liberal Education	Institute of Liberal Education	Introduction to Korean History	CLT0738	3
Institute of Liberal Education	Institute of Liberal Education	Introduction to Korean Traditional Art	CLT0735	3
Institute of Liberal Education	Institute of Liberal Education	Introduction to Korean Traditional Music	CLT0734	3
Institute of Liberal Education	Institute of Liberal Education	Korean Langauge and Linguistic Typology	CLT0731	3

College	Department	Course Title	Course Code	Credits
Institute of Liberal Education	Institute of Liberal Education	Understanding Korean Society	CLT0733	3
Language Education Center	Language Education Center	Korean Listening and Speaking 1	CLT0710	3
Language Education Center	Language Education Center	Korean Listening and Speaking 1	CLT0710	3
Language Education Center	Language Education Center	Korean Listening and Speaking 1	CLT0710	3
Language Education Center	Language Education Center	Korean Listening and Speaking 2	CLT0711	3
Language Education Center	Language Education Center	Korean Listening and Speaking 2	CLT0711	3
Language Education Center	Language Education Center	Korean Listening and Speaking 2	CLT0711	3
Language Education Center	Language Education Center	Korean Listening-Speaking 3	CLT0788	3
Language Education Center	Language Education Center	Korean Listening-Speaking 3	CLT0788	3
Language Education Center	Language Education Center	Korean Reading and Writing 1	CLT0712	3
Language Education Center	Language Education Center	Korean Reading and Writing 1	CLT0712	3
Language Education Center	Language Education Center	Korean Reading and Writing 1	CLT0712	3
Language Education Center	Language Education Center	Korean Reading and Writing 2	CLT0713	3
Language Education Center	Language Education Center	Korean Reading and Writing 2	CLT0713	3
Language Education Center	Language Education Center	Korean Reading and Writing 2	CLT0713	3
Language Education Center	Language Education Center	Korean Reading-Writing 3	CLT0789	3
Life Science	Food and Nutrition	Human Physiology	MED1010	3
Natural Science	Chemistry	Analytical Chemistry 2	CHM2017	3
Natural Science	Systems Biology	NeuroBiochemistry	BST4045	3
Pharmacy	Pharmacy	Cosmeticology	PHM3002	2
Pharmacy	Pharmacy	Medicinal Botany	PHM4091	2
Pharmacy	Pharmacy	Medicinal Chemistry 2	PHM3027	2
Pharmacy	Pharmacy	Natural Products Chemistry	PHM4126	3
Social Science	Communication	Digital Journalism	COM4019	3
Social Science	Political Science & International Relations	American Politics	POS2023	3
Social Science	Psychology	Introduction to Psychology	CLT0046	3
Social Science	Sociology	Political Sociology	SOC2007	3
Social Science	Sociology	Urban Sociology	SOC3007	3
Veterinary Medicine	Veterinary Medicine	Veterinary Oncology	VET4094	3
Graduate School	Advanced Chemicals & Engineering	Advanced Instrumental Analysis for Energy Materials	GR20317	3
Graduate School	Applied Biology	Advanced Insect Biochemistry and Molecular Biology	GR21529	3
Graduate School	Applied Biology	Advanced Scientific Communication and Writing Scientific Papers	GR30770	3
Graduate School	Applied Biology	Plant Growth Regulator	GR19991	3
Graduate School	Applied Biology	Protein Biochemistry	GR19834	3
Graduate School	Biotechnology	Animal cell culture1	GR23112	3
Graduate School	Biotechnology	Plant Environmental Stress 1	GR21409	3
Graduate School	Biotechnology	Special Topics in Biochemistry 2	GR04157	3
Graduate School	Business Administration	Multimedia Applications Study	GR18356	3
Graduate School	Dental Science	Advanced Hard Tissue Biology	GR15382	3
Graduate School	Dental Science	Mixed Dentition Treatment	GR15484	3
Graduate School	Dental Science	Team Approach of Cleft Lip and Palate	GR15413	3
Graduate School	Electronic Computer Engineering	Mathematics for computer scientist	GR20328	3
Graduate School	Electronic Computer Engineering	Three Dimensional Vision	GR17438	3
Graduate School	Electronic Computer Engineering	Topics in Deep Learning	GR23069	3
Graduate School	Electronic Computer Engineering	Topics in Distributed Systems	GR16446	3



College	Department	Course Title	Course Code	Credits
Graduate School	English Education	English Applied Phonetics	GR19085	3
Graduate School	Food Science and Technology	Advanced Food Hygiene	GR05131	3
Graduate School	History	Seminar in Contemporary Western History	GR04226	3
Graduate School	Interdisciplinary Program of NGO	Democracy and Participatory Democracy	GR22089	3
Graduate School	Interdisciplinary Program of NGO	Introduction to Civil society & Social movement	GR22087	3
Graduate School	Interdisciplinary Program of NGO	NGO Research Methods	GR19002	3
Graduate School	Interdisciplinary Program of NGO	Women in the Third world	GR22101	3
Graduate School	Law	International Human Rights Law	GR18136	3
Graduate School	Materials Science and Engineering	Advanced Surface Treatment of Metals	GR01760	3
Graduate School	Materials Science and Engineering	Amorphous Materials	GR03718	3
Graduate School	Materials Science and Engineering	Battery Materials Science	GR30683	3
Graduate School	Materials Science and Engineering	Electrochemical Energy Conversion and Storage	GR30540	3
Graduate School	Materials Science and Engineering	Surface Phenomena of Materials	GR06950	3
Graduate School	Materials Science and Engineering	The Role of Solid State Electrochemistry in Green Energy Technology	GR21390	3
Graduate School	Mechanical Engineering	Advanced mold design	GR20969	3
Graduate School	Mechanical Engineering	Fracture Mechanics	GR08564	3
Graduate School	Medical Engineering Joint Research	Introduction to Biomedical Imaging	GR21935	3
Graduate School	Medical Engineering Joint Research	Research Guidance 1	GR21999	3
Graduate School	Oceanography	Atmosphere Ocean General Circulation	GR31014	3
Graduate School	Pharmacy	Advanced Pharmaceutical Chemistry I	GR05556	3
Graduate School	Pharmacy	Advanced Topics in Biopharmaceuticals/Biomedicines	GR30529	3
Graduate School	Pharmacy	INeuronal interactions	GR16999	3
Graduate School	Polymer Engineering	Organic Composite Materials	GR16565	3
Graduate School	Polymer Engineering	Special topics of Nanostructured techniques for Nanofabrication	GR31176	3
Graduate School	Regional · Bio System Engineering	Special Topics in Biosystems Mathematics 2	GR21910	3
Graduate School	Veterinary Medicine	Veterinary Alimentary Pathology	GR20713	3
Graduate School	Veterinary Medicine	Veterinary Dermatopathology	GR20718	3
Graduate School	Veterinary Medicine	Veterinary Respiratory Pathology	GR20714	3



# 06

Extracurricular  
Activities in  
Cooperation with GIC





# Extracurricular Activities offered from Gwangju International Center(GIC)



## Korean Class

- 7 Weeks of Courses (5th Semester: Sep.~Oct., 6th Semester: Nov.~Dec.) Basic, Intermediate Level, and Tutoring Program
- Location : Gwangju International Center Lecture Room



## GIC Talk

- Open English Language class sharing knowledge and experiences with different speakers every week
- Every Saturday at 4PM / GIC



## GIC Language Exchange (English, Chinese)

- Learning about other cultures and language itself by using Korean, English, and Chinese.
- Every Wednesday at 7PM / GIC



## The 10th Freecycle

- Free Recycle Event(flea market). Allow to take used materials in needs and donate ones that are unneeded.
- September 8th / GIC
- 1,000KRW for entrance fee



## GIC Library

- Approximately 5,000 Korean & English Books
- Free to read on a visit
- Available to lend out books if joins the organization as the supporting member
- Location : GIC 2nd floor



## Call for Guest Speakers: Fun with Global Culture

- Introducing my country's culture to Korean families. Presentation on Food, Culture differences, etc.
- Once every month on Saturday / GIC
- Fees for materials & lecture provided. Group of 3~4 members for each country



## Gwangju Tour with Global Friends

- Building friendships with Korean university students from Gwangju regional universities by leaning cultures and history through Gwangju City Tours
- Date : September 29th, December
- English Program



## Gwangju International Communities Day

- A world culture festival, available to enjoy worldwide traditional food, activities, performances, and join international communities
- Date : One of the Sundays in November
- Location : 518 City Hall Square (Front of the Asia Culture Center)



## World Human Rights Cities Forum

- Human Rights Cities Themed International Academic Conference with global human rights activists
- Theme : "Whom do we live with?": Diversity, Inclusiveness, and Peace" (Whom Do We Live With? Diversity, Inclusiveness, and Peace)
- Oct. 18th(Thrs.) ~21st(Sun.) / KimDaeJung Convention Center



## Gwangju Urban Design Forum

- International Academic Conference seeking for direction for development on City Design with related participants from domestic & international urban design and construction academy
- Theme : Urban Design "Finding the Character of Gwangju"
- Nov. 28th(Wed.)~ 30th(Fri.) / KimDaeJung Convention Center



## WHRCF Human Rights Boot Camp

- Studying about urban human rights and related issues. Meeting Human Rights activists by participating the Forum.
- Sept. 15th, 29th, Oct. 6th, 13th(13:30~16:00), 18~21st (Participating the Forum)
- Any domestic and international residents interested in Human Rights



**Office of International Affairs  
Chonnam National University**

G&R hub 2F, Suite 214, 77 Yongbong-ro, Buk-gu, Gwangju 61186 South Korea  
<http://international.jnu.ac.kr>